

QFX[®]

WHERE THE PARTY BEGINS[™]



INSTRUCTION MANUAL

**WARNING!**

TO REDUCE THE RISK OF ELECTRIC SHOCK, DO NOT REMOVE THE COVER ON THIS SPEAKER. THERE ARE NO USER-SERVICEABLE PARTS INSIDE. REFER ALL SERVICING TO A QUALIFIED TECHNICIAN
To prevent fire or electric shock, do not expose this equipment to rain or moisture. Do not store or operate this product near any liquids, heat sources such as radiators, heat registers. Clean only with a dry cloth. Users should exhibit extra safety when this symbol appears in this instruction manual and follow all precautions as they are stated.

**¡ADVERTENCIA!**

PARA REDUCIR EL RIESGO DE DESCARGA ELÉCTRICA, NO quite la cubierta en este altavoz. NO HAY PARTES REPARABLES POR EL USUARIO ADENTRO. SOLICITE EL SERVICIO A UN TÉCNICO CALIFICADO
Para evitar incendios o descargas eléctricas, no exponga este equipo a la lluvia o la humedad. No almacene o utilice este producto cerca de líquidos, fuentes de calor, como radiadores, acumuladores de calor. Limpie sólo con un paño seco. Los usuarios deben exhibir una seguridad adicional cuando este símbolo aparece en este manual de instrucciones y siga todas las precauciones, ya que se han precisado.

Charging the Speaker

1. Full recharge takes 8-12 hours.
2. Please use the supplied power cable to recharge the speaker.
3. When you are using your unit while it is plugged to an external power source, battery switch can be ON or OFF.

WIRED MICROPHONE INSTRUCTIONS

1. Insert the microphone plug into the microphone input jack.
2. Adjust the microphone volume knob MIC VOL for proper volume.
3. Adjust the echo depth to the proper position.
4. Now you can start using your microphone.

BLUETOOTH

You can connect your compatible wireless bluetooth devices, such as a mobile phone, tablet etc., to listen to audio tracks. Press the MODE button on the speaker or remote control to enter bluetooth mode, indicated on the LED display. Select "QFX LMS-1234" in your device settings to pair, and once successful, you will hear a sound of notice on the speaker.

PRECAUTIONS

To prevent operational problems or serious damage to the speaker unit, please follow the below precautions:

1. Pull out the power cord from the end of the plug. Do not pull the wire.
2. The speaker should be kept away from other heat sources.
3. Do not attempt to open the internal speaker unit or change the circuitry as this may cause the unit to be damaged or cause an electrical shock.
4. If you are not going to use the unit for a long period of time, pull out the plug and store in a cool dry place.
5. Ensure the speaker is properly ventilated & kept in a dry location. It is recommended that the speaker be kept a minimum of 4 inches away from any wall or object.

PRECAUCIONES

Para evitar problemas operativos o daños graves a la unidad de altavoz, siga las siguientes precauciones:

1. Saque el cable de alimentación del extremo del enchufe. No tire del cable.
2. El altavoz debe mantenerse alejado de otras fuentes de calor.
3. No intente abrir la unidad de altavoz interno ni cambiar el circuito, ya que esto puede dañar la unidad o provocar una escarga eléctrica.
4. Si no va a utilizar la unidad durante un largo período de tiempo, desenchúfela y guárdela en un lugar fresco y seco.
5. Asegúrese de que el altavoz esté adecuadamente ventilado y mantenido en un lugar seco. Se recomienda mantener el altavoz a una distancia mínima de 4 pulgadas de cualquier pared u objeto.

Cargar el altavoz

1. La recarga completa tarda entre 8 y 12 horas.
2. Utilice el cable de alimentación suministrado para recargar el altavoz.
3. Cuando utiliza su unidad mientras está enchufada a un Fuente de alimentación externa, el interruptor de la batería puede estar encendido o apagado.

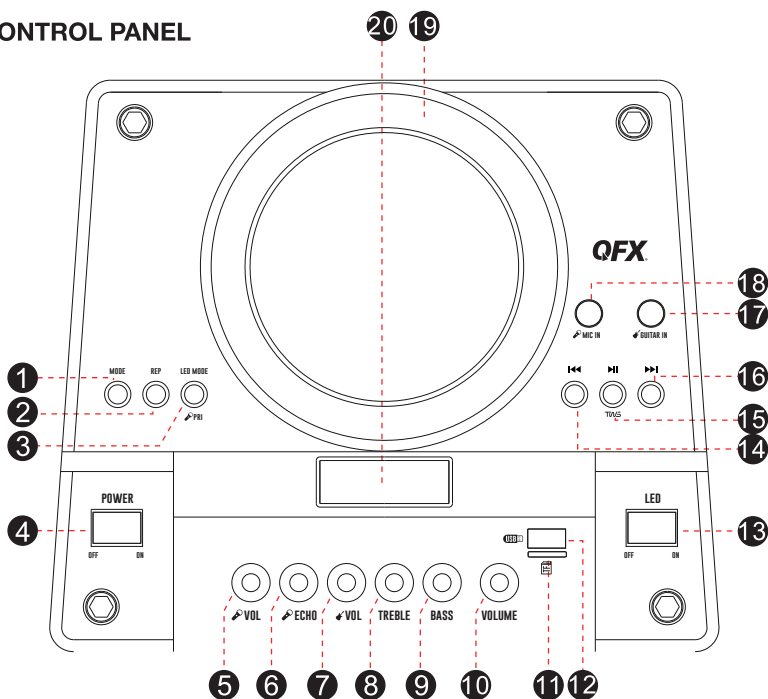
INSTRUCCIONES DEL MICRÓFONO CON CABLE

1. Inserte el enchufe del micrófono en el conector de entrada del micrófono.
2. Ajuste la perilla de volumen del micrófono MIC VOL para obtener el volumen adecuado.
3. Ajuste la profundidad del eco a la posición adecuada.
4. Ahora puedes empezar a usar tu micrófono.

BLUETOOTH

Puede conectar sus dispositivos Bluetooth inalámbricos compatibles, como un teléfono móvil, tableta, etc., para escuchar pistas de audio. Presione el botón MODE en el altavoz o control remoto para ingresar al modo bluetooth, indicado en la pantalla LED. Seleccione "QFX LMS-1234" en la configuración de su dispositivo para emparejar y, una vez exitoso, escuchará un sonido de aviso en el altavoz.

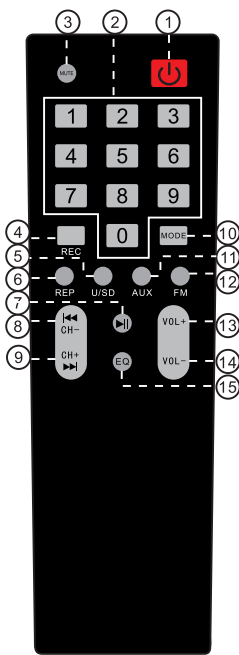
CONTROL PANEL



1. **MODE:** Different mode transformation
2. **REP:** Repeat Play Key
3. **LED MODE:** Press the LED switch M.PRI: Press and Hold the microphone is preferred
4. **POWER:** Power On/Off button
5. **MIC. VOL:** Microphone volume control
6. **ECHO:** Microphone echo control
7. **GUITAR VOL:** Guitar volume control
8. **TREBLE:** Treble control
9. **BASS:** Bass control
10. **VOLUME:** Master volume control
11. **TF Card:** TF Card Input
12. **USB:** USB music player
13. **LED POWER:** Front LED light switch
14. **PREV/CH-:** Press for Previous Track in Mp3 mode; Press for previous channel in FM mode.
15. **PLAY/SCAN:** Press to play or pause in Mp3 mode; Press to Auto Scan and Preset available frequencies in FM mode.
16. **NEXT/CH+:** Press for next Track in Mp3 mode; press for next channel in FM mode.
17. **GUITAR INPUT:** Wired microphone input
18. **MIC INPUT:** Wired microphone input
19. **DISCO BALL:** Disco party light
20. **LED DISPLAY:** LED display

1. **MODO:** Transformación de modo diferente
2. **REP:** Repetir tecla de reproducción
3. **MODO LED:** presione el interruptor LED M.PRI: presione y mantenga presionado el micrófono, es preferible
4. **ENERGÍA:** Botón de encendido/apagado
5. **MICRÓFONO. VOL:** control de volumen del micrófono
6. **ECHO:** control de eco del micrófono
7. **GUITAR VOL:** Control de volumen de guitarra
8. **AGUDOS:** control de agudos
9. **BAJOS:** control de graves
10. **VOLUMEN:** Control de volumen maestro
11. **Tarjeta TF:** Entrada de tarjeta TF
12. **USB:** reproductor de música USB
13. **LED POWER:** Interruptor de luz LED frontal
14. **PREV/CH-:** Presione para la pista anterior en modo Mp3; Presione para el canal anterior en modo FM.
15. **REPRODUCIR/ESCANEAR:** Presione para reproducir o pausar en modo Mp3; Presione para buscar automáticamente y preestablecer las frecuencias disponibles en el modo FM.
16. **NEXT/CH+:** Presione para la siguiente pista en modo Mp3; presione para el siguiente canal en modo FM.
17. **ENTRADA DE GUITARRA:** Entrada de micrófono con cable
18. **ENTRADA DE MIC:** Entrada de micrófono con cable
19. **BOLA DE DISCO:** Luz de fiesta disco
20. **PANTALLA LED:** Pantalla LED

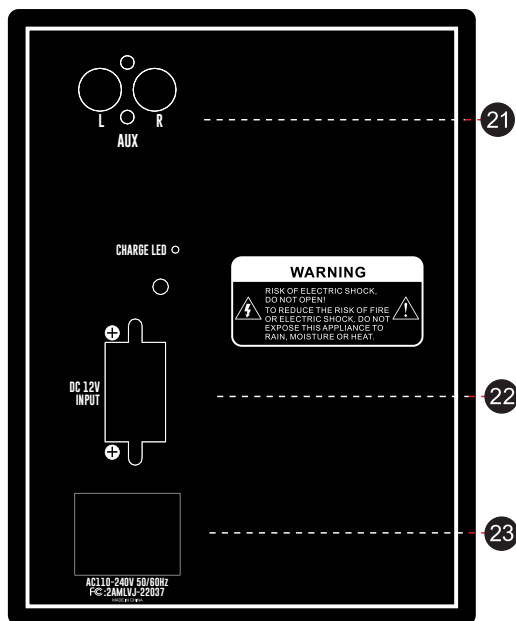
REMOTE CONTROL



1. Power On/Off: Turns the Power On/Off
2. Number: Number keypad (0-10)
3. MUTE: Press to mute the Volume
4. REC: Recording
5. U/SD: signal input
6. REP: Press to repeat and/or shuffle
7. Press to Play or Pause
8. Previous Track/Channel
9. Next Track/Channel
10. MODE: Select source (BT, Line, FM, USB/TF)
11. AUX: Aux input
12. FM: FM radio
13. VOL+: Volume up
14. VOL- : Volume down
15. EQ: Equalizer presets

1. Encendido/apagado: enciende y apaga el dispositivo.
2. Número: teclado numérico (0-10)
3. MUTE: presione para silenciar el volumen.
4. REC: Grabación
5. U/SD: entrada de señal
6. REP: presione para repetir y/o reproducir aleatoriamente
7. Presione para reproducir o pausar
8. Pista/canal anterior
9. Siguiente pista/canal
10. MODO: Seleccionar fuente (BT, Línea, FM, USB/TF)
11. AUX: entrada auxiliar
12. FM: radio FM
13. VOL+: Subir volumen
14. VOL-: Bajar volumen
15. EQ: ajustes preestablecidos del ecualizador

BACK PANEL



21. AUX INPUT: Audio input
22. DC 12V INPUT: External DC 12V
23. AC INPUT: AC 110-240V 50/60Hz

21. ENTRADA AUX: Entrada de audio
22. ENTRADA DE 12 V CC: 12 V CC externa
23. ENTRADA DE CA: CA 110-240 V 50/60 Hz

TWS

TRUE WIRELESS STEREO



CONNECT 2

CONECTAR 2 • RELIER 2

PAIR 2 LMS-1234

**STEP 1
PASO 1
ÉTAPE 1**



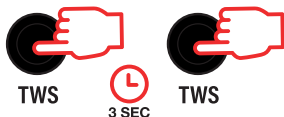
BLUETOOTH

Push the Mode Button on both speakers until speakers are in Bluetooth Mode. Screen will display the word "Blue"

Presione el botón de modo en ambos altavoces hasta los altavoces están en Bluetooth Modo. La pantalla mostrará la palabra "Blue"

Appuyez sur le bouton Mode sur les deux haut-parleurs jusqu'à ce que les haut-parleurs soient en mode Bluetooth. L'écran affichera le mot «Blue»

STEP 2 PASO 2 ÉTAPE 2



When both speakers are in Bluetooth mode, push and hold the TWS button for 3 seconds. You will hear a beep. Next time you put both speakers in Bluetooth mode at the same time, speakers will connect automatically.

Cuando ambos altavoces estén en modo Bluetooth, presione y mantenga presionado el botón TWS durante 3 segundos. Oírás un bip. La próxima vez que pongas ambos altavoces en Bluetooth modo al mismo tiempo, los altavoces se conectarán automáticamente.

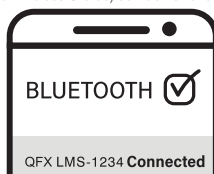
Lorsque les deux enceintes sont en mode Bluetooth, appuyez sur et maintenez le bouton TWS pendant 3 secondes. Vous entendrez un bip. La prochaine fois que vous mettez les deux haut-parleurs en Bluetooth en même temps, les haut-parleurs se connecteront automatiquement.

STEP 3 PASO 3 ÉTAPE 3

On your device, turn your Bluetooth settings "ON", you will then select "QFX LMS-1234". Enjoy TWS (True Wireless Stereo) sound from your phone via Bluetooth!

En su dispositivo, active la configuración de Bluetooth, luego seleccionará "QFX LMS-1234". Disfruta TWS (True Wireless Stereo) sonido desde su teléfono a través de Bluetooth!

Sur votre appareil, activez vos paramètres Bluetooth, vous sélectionnerez ensuite «QFX LMS-1234». Profitez de TWS (True Wireless Stereo) son de votre téléphone via Bluetooth!





LIMITED PRODUCT WARRANTY POLICY

Before returning your Product for service under this Warranty, please (i) read the instruction manual carefully and visit our website at www.qfxusa.com for Product updates and extended support documentation (e.g., Common Troubleshooting Guides); (ii) if you are still having trouble with your Product, please contact the QFX Customer Support Department.

Subject to the terms and conditions herein, QFX, Inc. (herein after called "QFX") warrants to the original purchaser of the Product ("Customer") that for the applicable Warranty Period listed below, the Product will be free from defects in material or workmanship under normal, non-commercial use ("Defects").

Warranty Period encompasses, as listed below, separate "Coverage Periods" for Parts and Labor, each Coverage Period to begin from the original date of Customer purchase. If Customer returns a defective Product (or any component thereof) during the applicable Warranty Period, QFX will, at its option, during the specified Coverage Periods for Parts and Labor (as applicable either: (i) repair the Product (or, as applicable, any component thereof) or (ii) replace the Product (or, as applicable, any component thereof) with a new or refurbished Product (or, as applicable, any component thereof), in either case free of charge to Customer for Parts and/or Labor (as applicable) during the specified Coverage Period only, and excluding applicable shipping charges (noted below), for which the Customer is responsible. The foregoing states the Customer's exclusive remedy and QFX sole liability for breach of the limited warranty contained herein.

This warranty covers only normal use. This warranty is not transferable. QFX is not responsible for warranty replacement should the QFX label or logo be removed or should the product fail to be properly maintained or fail to function properly as a result of misuse, abuse, immersion in liquids, improper installation, improper shipping, damage caused by disasters such as fire, flood, or service other than by QFX. In addition, this warranty excludes any Product (or, as applicable, any component thereof) that has been subject to or Defects resulting from: (a) any neglect or misuse by a Customer, an accident, improper application, violation of operating instructions for the Product, any other Customer-induced damage, or the alteration or removal of any Product serial number; (b) any modification or repair to Product (or, as applicable, any component thereof) by any party other than QFX or a party authorized in writing by QFX; (c) any damage to Product (or, as applicable, any component thereof) due to power surges, incorrect electrical voltage, misconnection to any device, or malfunction of any device used with the Product (or, as applicable, any component thereof); (d) cosmetic damage to the Product (or, as applicable, any component thereof) caused by normal wear and tear; (e) shipping damage that occurs while the Product is in transit; (f) damage caused by heat sources, sunlight, electromagnetic conditions, or other climatic conditions or (g) any acts of God.

Product is sold to Customer for personal, non-commercial use only. Product is not warranted for Customer's commercial or rental use. In addition, Product is not warranted against failure, and should not be used by Customer for any application where (i) there is a risk that any data stored on Product will be breached or otherwise compromised, or (ii) the date stored on Product is relied upon for medical or lifesaving applications. QFX disclaims any Warranty for any of the foregoing uses to the fullest extent permitted by law. Customer assumes any and all risks associated with such uses of Product, and agrees to indemnify QFX for any damages claimed against QFX for such uses.

EXCEPT FOR EXPRESS WARRANTIES STATED ABOVE AND TO THE MAXIMUM EXTENT PERMITTED BY LAW, THE PRODUCTS ARE PROVIDED "AS IS" AND QFX DISCLAIMS ALL OTHER WARRANTIES, INCLUDING WITHOUT LIMITATION ANY IMPLIED WARRANTY (i) OF MERCHANTABILITY, (ii) OF FITNESS FOR A PARTICULAR PURPOSE, OR (iii) OF NON-INFRINGEMENT OF THIRD PARTY RIGHTS. TO THE MAXIMUM EXTENT PERMITTED BY APPLICABLE LAW, IN NO EVENT WILL QFX BE LIABLE TO CUSTOMER OR ANY THIRD PARTY FOR ANY INDIRECT, SPECIAL, INCIDENTAL, CONSEQUENTIAL, EXEMPLARY OR PUNITIVE DAMAGES, INCLUDING, WITHOUT LIMITATION, ANY LOST PROFITS OR REVENUES, LOSS OR INACCURACY OF ANY DATA OR COST OF SUBSTITUTE GOODS, REGARDLESS OF THE THEORY OF LIABILITY (INCLUDING NEGLIGENCE) AND EVEN IF QFX HAS BEEN ADVISED OF THE POSSIBILITY OF SUCH DAMAGES, QFX AGGREGATE LIABILITY TO CUSTOMER FOR ACTUAL DIRECT DAMAGES FOR ANY CAUSE WHATSOEVER SHALL BE LIMITED TO THE CUMULATIVE PRODUCT FEES PAID BY THAT CUSTOMER FOR THE PRODUCTS CAUSING THE DAMAGES, IF ANY.

This Warranty gives Customer specific rights, and Customer may also have other rights that vary from jurisdiction to jurisdiction. Warning: Some Products may contain components that are small enough to be swallowed. Please keep out of reach of children. In order for the return to be processed, you must send the Product PREPAID to the address below in the original packaging or reasonable substitute to prevent damage and include: (1) a dated sales receipt (which must have a purchase date that falls in the Warranty Period specified in the table below) that indicates the place of purchase, model number of Product, and amount paid, (2) a detailed description of Customer's problem with Product, (3) Customer's full name, phone number, and return address, (3) all of the accessories that came with the Product package must be sent along with the main Product, (4) a cashier's check or money order payable to QFX, Inc., in the amount specified for the item in the product table below for return shipping and handling. If in the case you cannot provide a money order or cashier's check, you can contact The QFX Customer Support Representative to arrange payment via credit card. No returned Product will be shipped back to a PO BOX. If a returned Product is found to have no problem and/or does not include ALL of the requirements indicated above, it may be returned back to the customer and will not be processed.

QFX USA®, Inc.
RMA Processing
Customer Support Department
2957 E. 46th Street | Vernon, CA 90058

✉ support@qfxusa.com
☎ (800) 864-CLUB (2582) or (323) 864-6900
🌐 qfxusa.com
🕒 Hours of Operation: Monday - Friday, 9am - 5pm PST

All prices and details below are for US Destinations excluding, Hawaii, Alaska and Puerto Rico. For excluded destinations and NON US destinations, please contact The QFX Customer Support Department directly for additional shipping fees and return instructions.

If you do not find your Product below, your Product model conflicts with multiple categories, and/or are unsure of which category the Product you have purchased will fall under, please contact our Customer Support Department for further instruction.

In order to determine the exact shipping cost that must be included with your product or paid for the product being returned, please refer to the table below. Please find the product you wish to return by category or model number prefix. QFX will not provide any return or refund to any customer for merchandise and will only honor the Limited Warranty restrictions mentioned in this document.

Please make sure to follow all directions prior to shipping back your item. If you are not sure what the shipping cost for your item is, or if your item category conflicts in the table below, please feel free to contact the QFX Support Department for further assistance.

PRODUCT CATEGORY	HANDLING	LABOR	PARTS
Earphones, Headphones, Pocket Radios, & Small Bluetooth vSpeakers	\$5.00	1 Year	1 Year
Personal Stereos	\$10.00	1 Year	1 Year
Portable Radio/Cassette	\$15.00	1 Year	1 Year
Large Portable Radio Cassette	\$20.00	1 Year	1 Year
Mobile Audio	\$10.00	1 Year	1 Year
Pro Audio SBX Systems	\$75.00	1 Year	1 Year
Pro Audio PBX Systems	\$75.00	1 Year	1 Year
Televisions	\$25.00	1 Year	1 Year
Telephones	\$10.00	1 Year	1 Year

THE WARRANTY AND REMEDY PROVIDED ABOVE ARE EXCLUSIVE AND IN LIEU OF ALL OTHER EXPRESSED OR IMPLIED WARRANTIES INCLUDING, BUT NOT LIMITED TO, THE IMPLIED WARRANTIES OF MERCHANTABILITY, NON-INFRINGEMENT OR FITNESS FOR A PARTICULAR PURPOSE. SOME LAWS DO NOT ALLOW THE EXCLUSION OF IMPLIED WARRANTIES. IF THESE LAWS APPLY, THEN ALL EXPRESSED OR IMPLIED WARRANTIES ARE LIMITED TO THE WARRANTY PERIOD IDENTIFIED ABOVE. UNLESS STATED HEREIN, ANY STATEMENT OR REPRESENTATIONS MADE BY ANY OTHER PERSONS OR FIRM ARE VOID. EXCEPT AS PROVIDED IN THIS WRITTEN WARRANTY, QFX SHALL NOT BE LIABLE FOR ANY LOSS, INCONVENIENCE, OR DAMAGE, INCLUDING DIRECT, SPECIAL, INCIDENTAL OR CONSEQUENTIAL DAMAGES, RESULTING FROM THE USE OR INABILITY TO USE THE QFX PRODUCT, WHETHER RESULTING FROM BREACH OF WARRANTY OR ANY OTHER LEGAL THEORY.

Some jurisdictions do not allow limitations on how long an implied warranty lasts, and some jurisdictions do not allow the exclusion or limitation of incidental or consequential damages, so the above limitations and exclusions may not apply to you. This warranty gives you special legal rights and you may have other rights which vary from jurisdiction to jurisdiction.

Copyright Protected 2023 ©



www.qfxusa.com



1-800-864-2582
Mon-Fri 9AM - 5PM (PST)



support@qfxusa.com
Mon-Fri 9AM - 5PM (PST)

THANK YOU.

QFX Where the Party Begins!

We would love to hear about your LMS-1234 journey!
Tag us **@QFXUSA** to share your stories.

FOLLOW US @QFXUSA

