

# QFX

WHERE THE PARTY BEGINS™



INSTRUCTION MANUAL

**⚡ WARNING! ⚡**

TO REDUCE THE RISK OF ELECTRIC SHOCK, DO NOT REMOVE THE COVER ON THIS SPEAKER. THERE ARE NO USER-SERVICEABLE PARTS INSIDE. REFER ALL SERVICING TO A QUALIFIED TECHNICIAN

To prevent fire or electric shock, do not expose this equipment to rain or moisture. Do not store or operate this product near any liquids, heat sources such as radiators, heat registers. Clean only with a dry cloth. Users should exhibit extra safety when this symbol appears in this instruction manual and follow all precautions as they are stated.

**⚡ ¡ADVERTENCIA! ⚡**

PARA REDUCIR EL RIESGO DE DESCARGA ELÉCTRICA, NO quite la cubierta en este altavoz. NO HAY PARTES REPARABLES POR EL USUARIO A DENTRO. SOLICITE EL SERVICIO A UN TÉCNICO CALIFICADO

Para evitar incendios o descargas eléctricas, no exponga este equipo a la lluvia o la humedad. No almacene o utilice este producto cerca de líquidos, fuentes de calor, como radiadores, acumuladores de calor. Limpie sólo con un paño seco. Los usuarios deben exhibir una seguridad adicional cuando este símbolo aparece en este manual de instrucciones y siga todas las precauciones, ya que se han precisado.



Thank you for purchasing the PBX-5180 speaker. Please adhere to all the instructions herein, and keep the instruction manual in a safe place for future reference.

1. Always firmly grasp the plug and pull the plug from the power supply, never yank the cable in order to pull out the plug. Avoid the use of an extension cable.
2. Ventilation: This unit should be placed in a well-ventilated space where it has no less than 10cm ventilation space on either side of it. Do not cover the unit with a cloth or blanket.
3. Casing Dismantling: DO NOT dismantle the casing. There are no usable parts inside the unit.
4. Should the unit emit any smell or smoke, immediately turn off the power supply.

Gracias por adquirir el altavoz PBX-5180. Siga todas las instrucciones aquí contenidas y guarde el manual de instrucciones en un lugar seguro para consultarlo en el futuro.

1. Siempre agarre firmemente el enchufe y desconéctelo de la fuente de alimentación, nunca tire del cable para desconectar el enchufe. Evite el uso de un cable de extensión.
2. Ventilación: Esta unidad debe colocarse en un espacio bien ventilado donde tenga al menos 10 cm de espacio de ventilación a cada lado. No cubra la unidad con un paño o manta.
3. Desmontaje de la carcasa: NO desmonte la carcasa. No hay piezas utilizables dentro de la unidad.
4. Si la unidad emite algún olor o humo, apague inmediatamente la fuente de alimentación.

Merci d'avoir acheté le haut-parleur PBX-5180. Suivez toutes les instructions contenues dans le présent document et conservez le manuel d'instructions dans un endroit sûr pour référence future.

1. Saisissez toujours fermement la fiche et débranchez-la de la source d'alimentation, ne tirez jamais sur le cordon pour débrancher la fiche. Évitez d'utiliser une rallonge.
2. Ventilation : Cet appareil doit être placé dans un espace bien ventilé où il dispose d'au moins 10 cm d'espace de ventilation de chaque côté. Ne couvrez pas l'appareil avec un chiffon ou une couverture.
3. Démontage du boîtier : NE démontez PAS le boîtier. Il n'y a aucune pièce utilisable à l'intérieur de l'unité.
4. Si l'appareil émet une odeur ou de la fumée, coupez immédiatement l'alimentation électrique.

## CONTROL PANEL



- |   |  |
|---|--|
| <p><b>1. POWER:</b> On/off Switch</p> <p><b>2. 6-BAND GRAPHIC EQ SECTION:</b> Adjust Each Frequency Band As Desired.</p> <p><b>3. MODE:</b> Toggle To Select Mode (BT, FM, USB/TF, ETC.)</p> <p><b>REC:</b> Insert USB/SD Card, Press Rec To Start Recording. Press It Again To Stop And Playback The Recorded Sound.</p> <p><b>PREV &lt;&lt;:</b> Previous Song Or Radio Station.</p> <p><b>TWS/SCAN &gt; :</b> Play/pause Music. Press and Hold To Automatically Scan And Save FM Radio Stations. For TWS, See TWS Section.</p> <p><b>NEXT &gt;&gt;:</b> Next Song Or Radio Station.</p> <p><b>4. USB/SD/TF:</b> MP3 Music Player From USB Drive Or Memory Cards.</p> | <p><b>5. MIC VOL:</b> Microphone Volume Control</p> <p><b>6. VOLUME:</b> Master Volume Control</p> <p><b>7. MIC 1:</b> Microphone Input 1 Jack</p> <p><b>8. MIC 2:</b> Microphone Input 2 Jack</p> <p><b>9. MIC PRI:</b> Microphone Priority ON/OFF Switch</p> <p><b>10. MIC TREBLE:</b> Microphone Treble Control</p> <p><b>MIC BASS:</b> Microphone Bass Control</p> <p><b>MIC DELAY:</b> Adjust The Amount Of Mic Echo</p> <p><b>MIC ECHO:</b> Adjust The Amount Of Mic Echo</p> <p><b>X-BASS:</b> Bass Level Adjustment For Music</p> <p><b>GUIT VOL:</b> Guitar Volume Control</p> <p><b>11. GUIT IN:</b> Guitar Input Jack</p> <p><b>12. AUX:</b> Audio Input Jack</p> <p><b>13. DISPLAY SCREEN:</b> Shows Unit Function</p> |
|---|--|

- |  |  |
|--|--|
| <p><b>1. ENERGÍA:</b> Interruptor de encendido/apagado</p> <p><b>2. SECCIÓN DEL EQ GRÁFICO DE 6 BANDAS:</b> Ajustar Cada banda de frecuencia según se desee.</p> <p><b>3. MODO:</b> alternar para seleccionar el modo (BT, FM, USB/TF, ETC.)</p> <p><b>REC:</b> inserte la tarjeta USB/sd, presione Rec para comenzar Grabación. Presiónelo nuevamente para detener y Reproduzca el sonido grabado.</p> <p><b>ANTERIOR &lt;&lt;:</b> Canción o estación de radio anterior.</p> <p><b>TWS/SCAN &gt; :</b> Reproducir/pausar música. Presione y Mantenga presionado para escanear y guardar FM automáticamente Estaciones de radio. Para TWS, consulte la sección TWS.</p> <p><b>SIGUIENTE &gt;&gt;:</b> Siguiete canción o estación de radio.</p> <p><b>4. USB/SD/TF:</b> Reproductor de música Mp3 desde USB Unidad o tarjetas de memoria.</p> | <p><b>5. MIC VOL:</b> Control de volumen del micrófono</p> <p><b>6. VOLUMEN:</b> Control de volumen maestro</p> <p><b>7. MIC 1:</b> Conector de entrada de micrófono 1</p> <p><b>8. MIC 2:</b> Conector de entrada de micrófono 2</p> <p><b>9. MIC PRI:</b> Prioridad del micrófono</p> <p><b>10. MIC TREBLE:</b> Control de agudos del micrófono</p> <p><b>MIC BASS:</b> Control de graves del micrófono</p> <p><b>MIC DELAY:</b> ajusta la cantidad de retardo del micrófono</p> <p><b>MIC ECHO:</b> ajusta la cantidad de eco del micrófono</p> <p><b>X-BASS:</b> Ajuste del nivel de graves para música</p> <p><b>GUIT VOL:</b> Control de volumen de guitarra</p> <p><b>GUIT IN:</b> Conector de entrada de guitarra</p> <p><b>11. AUX:</b> Conector de entrada de audio</p> <p><b>12. PANTALLA DE VISUALIZACIÓN:</b></p> <p><b>13. Muestra la función de la unidad</b></p> |
|--|--|

- |  |  |
|--|--|
| <p><b>1. PUISSANCE :</b> interrupteur marche/arrêt</p> <p><b>2. SECTION D'ÉQ GRAPHIQUE À 6 BANDES :</b> Ajustez Chaque bande de fréquence comme vous le souhaitez.</p> <p><b>3. MODE :</b> basculer pour sélectionner le mode (BT, FM, USB/TF, etc.)</p> <p><b>REC :</b> Insérez la carte USB/SD, appuyez sur Rec pour démarrer. Enregistrement. Appuyez à nouveau pour arrêter et Lecture du son enregistré.</p> <p><b>PREV &lt;&lt; :</b> Chanson ou station de radio précédente.</p> <p><b>TWS/SCAN &gt;  :</b> lecture/pause de la musique. Appuyez sur Et Maintenez enfoncé pour numériser et enregistrer automatiquement Fm Stations de radio. Pour les Tws, voir la section Tws.</p> <p><b>SUIVANT &gt;&gt; :</b> Chanson ou station de radio suivante.</p> <p><b>4. USB/SD/TF :</b> lecteur de musique Mp3 depuis USB Lecteur ou cartes mémoire.</p> | <p><b>5. MIC VOL :</b> contrôle du volume du microphone</p> <p><b>6. VOLUME :</b> contrôle du volume principal</p> <p><b>7. MIC 1 :</b> entrée microphone 1 prise</p> <p><b>8. MIC 2 :</b> prise d'entrée microphone 2</p> <p><b>9. MIC PRI :</b> interrupteur marche/arrêt de priorité au micro</p> <p><b>10. MIC TREBLE :</b> contrôle des aigus du microphone</p> <p><b>MIC BASS :</b> contrôle des basses du microphone</p> <p><b>MIC DELAY :</b> Ajustez la quantité de retard du micro</p> <p><b>MIC ECHO :</b> Ajustez la quantité d'écho du micro</p> <p><b>X-BASS :</b> réglage du niveau des basses pour la musique</p> <p><b>GUIT VOL :</b> contrôle du volume de la guitare</p> <p><b>11. GUIT IN :</b> Prise d'entrée guitare</p> <p><b>12. AUX :</b> prise d'entrée audio</p> <p><b>13. ÉCRAN D'AFFICHAGE :</b> affiche la fonction de l'unité</p> |
|--|--|

## REMOTE CONTROL / CONTROL REMOTO / TÉLÉCOMMANDE



1. Press to turn the unit ON and OFF\*
2. MODE: USB/SD/LINE/BLUE/AUX
3. Prev Song/FM CH-
4. Play/Pause/FM tuner
5. Next Song/FM CH+
6. Repeat
7. Stop
8. Volume Increase
9. Volume Decrease
10. Mute
11. Preset EQ Modes
12. Number Keys

\*While unit power switch is on.

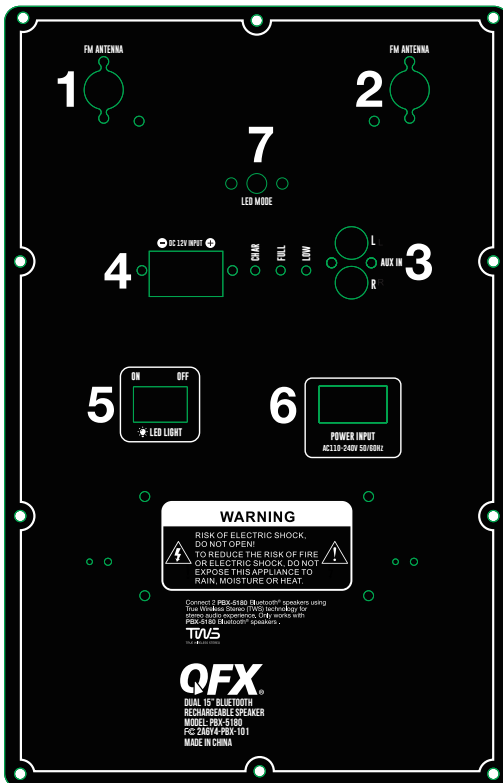
1. Presione para encender y apagar la unidad\*
2. USB/SD/LINE/AZUL/AUX
3. Canción anterior/FM CH-
4. Reproducir/Pausar/Sintonizador FM
5. Siguiete canción/FM CH+
6. Repetir
7. Detener
8. Aumento de volumen
9. Disminución de volumen
10. Silenciar
11. Modos de equalización
12. Teclas numéricas

\*Mientras el interruptor de alimentación de la unidad está encendido.

1. Appuyez pour allumer et éteindre l'appareil\*
2. USB/SD/LIGNE/BLEU/AUX
3. Chanson précédente/FM CH-
4. Lecture/Pause/Tuner FM
5. Chanson suivante/FM CH+
6. Répéter
7. Arrêt
8. Augmentation du volume
9. Diminution du volume
10. Muet
11. Modes d'égalisation prédéfinis
12. Touches numériques

\*Lorsque l'interrupteur d'alimentation de l'unité est allumé.

## BACK PANEL FUNCTION / FUNCIÓN DEL PANEL POSTERIOR / FONCTION DU PANNEAU ARRIERE



1. FM Antenna
2. FM Antenna
3. AUX In: RCA Auxiliary Input
4. DC 12V: External Battery Supply
5. Led Light: Led Light ON/OFF Switch
6. Power Input: Power Supply AC 110-240V
7. LED Light Modes Switch

1. Antena FM
2. Antena FM
3. Entrada AUX: Entrada auxiliar RCA
4. CC 12 V: suministro de batería externa
5. Luz LED: encendido/apagado de luz LED
7. Interruptor de modos de luz LED

1. Antenne FM
2. Antenne FM
3. Entrée AUX : entrée auxiliaire Rca
4. DC 12V : alimentation par batterie externe
5. Lumière LED : lumière LED allumée/éteinte.
7. Commutateur de modes d'éclairage LED

**WARNING**  
 RISK OF ELECTRIC SHOCK.  
 DO NOT OPEN!  
 TO REDUCE THE RISK OF FIRE  
 OR ELECTRICAL SHOCK, DO NOT  
 EXPOSE THIS APPLIANCE TO  
 RAIN, MOISTURE OR HEAT.

Connect 2 PBX-5180 Bluetooth® speakers using  
 two Wireless Stereo (WSD) cables for  
 stereo music experiences. Only works with  
 PBX-5180 Bluetooth® speakers.

TV-LS

**QFX**  
 DUAL 15" BLUETOOTH  
 RECHARGEABLE SPEAKER  
 MODEL: PBX-5180  
 FCC Z4749 / PBA-101  
 MADE IN CHINA

**CONNECTION**

1. 110V-240VAC, 50/60Hz power: The battery will charge when AC power is connected. Red light indicates that the battery is charging. Green light indicates that the battery is completely charged.
2. The internal battery will charge when AC power is connected even if unit power is switched OFF.
3. The speaker battery can also be charged using a 12V external car battery or a DC 12V input. Please connect according to the correct "+" and "-" polarity.
4. Adjust the function keys to suit your personal sound preference.

**BLUETOOTH INSTRUCTION**

Change the MODE to "BLUE". Ensure you enable the Bluetooth function on your Bluetooth device. Search for Bluetooth connection until you find "QFX PBX-5180" and pair it. You will hear Bluetooth "connected" voice prompt.

**TWS CONNECTION**

True Wireless Stereo (TWS) requires that you have two of the same model PBX-5180 speakers.

- STEP 1** Push the MODE button on both speakers until speakers are in Bluetooth mode. Screen will display the word "BLUE".
- STEP 2** When both speakers are in Bluetooth mode, push and hold the TWS button for 3 seconds. You will hear "TWS Connected" and screen display "bt/btst". Next time you put both speakers in Bluetooth mode at the same time, speakers will connect automatically.
- STEP 3** On your device, turn your Bluetooth settings "ON", then select "QFX PBX-5180" and pair. Enjoy TWS (True Wireless Stereo) sound from your phone via Bluetooth!

**BATTERY AND CHARGING**

1. The speaker requires up to 5 hours to fully charge. It will automatically begin charging once the power cord is connected.
2. Low battery level may result in distorted sound. For best sound performance, please check the battery charge level indicator.
3. To maximize the battery's lifespan, please charge the battery immediately. When the unit is not used for prolonged periods of time, the battery will gradually lose its power. It is recommended to fully charge the battery at least every 30 days.
4. Switch the unit OFF when not in use to save battery life.

**CONEXIÓN**

1. Alimentación de 110 V-240 V CA, 50/60 Hz: la batería se cargará cuando se conecte la alimentación de CA. La luz roja indica que la batería se está cargando. La luz verde indica que la batería está completamente cargada.
2. La batería interna se cargará cuando se conecte la alimentación de CA incluso si la unidad está apagada.
3. La batería del altavoz también se puede cargar utilizando una batería de automóvil externa de 12 V o una entrada de 12 V CC. Conéctelo de acuerdo con la polaridad "+" y "-" correcta.
4. Ajuste las teclas de función para adaptarla a sus preferencias de sonido personales.

**INSTRUCCIONES POR BLUETOOTH**

Cambie el MODO a "AZUL". Asegúrese de habilitar la función Bluetooth en su dispositivo Bluetooth. Busque la conexión Bluetooth hasta encontrar "QFX PBX-5180" y emparejelo. Escuchará el mensaje de voz "conectado" de Bluetooth.

**CONEXIÓN TWS**

True Wireless Stereo (TWS) requiere que tengas dos altavoces PBX-5180 del mismo modelo.

**PASO 1** Presione el botón MODE en ambos parlantes hasta que los parlantes estén en modo Bluetooth. La pantalla mostrará la palabra "AZUL".

**PASO 2** Cuando ambos altavoces estén en modo Bluetooth, mantenga presionado el botón TWS durante 3 segundos. Escuchará "TWS Connected" y en la pantalla aparecerá "bt/btst". La próxima vez que pongas ambos altavoces en modo Bluetooth al mismo tiempo, los altavoces se conectarán automáticamente.

**PASO 3** En su dispositivo, active la configuración de Bluetooth, luego seleccione "QFX PBX-5180" y empareje. ¡Disfruta del sonido TWS (True Wireless Stereo) desde tu teléfono a través de Bluetooth!

**BATERÍA Y CARGA**

1. El altavoz requiere hasta 5 horas para cargarse completamente. Comenzará a cargarse automáticamente una vez que se conecte el cable de alimentación.
2. El nivel bajo de batería puede provocar un sonido distorsionado. Para obtener el mejor rendimiento de sonido, verifique el indicador del nivel de carga de la batería.
3. Para maximizar la vida útil de la batería, cárguela inmediatamente. Cuando la unidad se usa solo durante períodos prolongados de tiempo, la batería perderá energía gradualmente. Se recomienda cargar completamente la batería al menos cada 30 días.
4. Apague la unidad cuando no esté en uso para ahorrar batería.

**CONNEXION**

1. Alimentation 110 V-240 V CA, 50/60 Hz : la batterie se charge lorsque l'alimentation secteur est connectée. Le voyant rouge indique que la batterie est en charge. Le voyant vert indique que la batterie est complètement chargée.
2. La batterie interne se chargera lorsque l'alimentation secteur est connectée, même si l'alimentation de l'appareil est éteinte.
3. La batterie du haut-parleur peut également être chargée à l'aide d'une batterie de voiture externe de 12 V ou d'une entrée DC 12 V. Veuillez vous connecter selon la polarité « + » et « - » correcte.
4. Ajustez les touches de fonction en fonction de vos préférences sonores personnelles.

**INSTRUCTIONS BLUETOOTH**

Changez le MODE en "BLEU". Assurez-vous d'activer la fonction Bluetooth sur votre appareil Bluetooth. Recherchez la connexion Bluetooth jusqu'à ce que vous trouviez « QFX PBX-5180 » et associez-le. Vous entendrez l'invite vocale Bluetooth « connecté ».

**CONNEXION TWS**

La véritable stéréo sans fil (TWS) nécessite que vous disposiez de deux haut-parleurs du même modèle PBX-5180.

**ÉTAPE 1** Appuyez sur le bouton MODE des deux haut-parleurs jusqu'à ce que les haut-parleurs soient en mode Bluetooth. L'écran affichera le mot «BLEU».

**ÉTAPE 2** Lorsque les deux haut-parleurs sont en mode Bluetooth, maintenez enfoncé le bouton TWS pendant 3 secondes. Vous entendrez « TWS Connected » et l'écran affichera « bt/btst ». La prochaine fois que vous mettrez les deux enceintes en mode Bluetooth en même temps, les enceintes se connecteront automatiquement.

**ÉTAPE 3** Sur votre appareil, activez vos paramètres Bluetooth sur « ON », puis sélectionnez « QFX PBX-5180 » et associez-le. Profitez du son TWS (True Wireless Stereo) depuis votre téléphone via Bluetooth !

**BATTERIE ET CHARGE**

1. L'enceinte nécessite jusqu'à 5 heures pour se charger complètement. Il commencera automatiquement à se charger une fois le cordon d'alimentation connecté.
2. Un niveau de batterie faible peut entraîner une distorsion du son. Pour de meilleures performances sonores, veuillez vérifier l'indicateur de niveau de charge de la batterie.
3. Pour maximiser la durée de vie de la batterie, veuillez la charger immédiatement. Lorsque l'appareil n'est pas utilisé pendant une période prolongée, la batterie perd progressivement sa puissance. Il est recommandé de charger complètement la batterie au moins tous les 30 jours.
4. Éteignez l'appareil lorsqu'il n'est pas utilisé pour économiser la batterie.



## LIMITED PRODUCT WARRANTY POLICY

Before returning your Product for service under this Warranty, please (i) read the instruction manual carefully and visit our website at [www.qfxusa.com](http://www.qfxusa.com) for Product updates and extended support documentation (e.g., Common Troubleshooting Guides); (ii) if you are still having trouble with your Product, please contact the QFX Customer Support Department.

Subject to the terms and conditions herein, QFX, Inc. (herein after called "QFX") warrants to the original purchaser of the Product ("Customer") that for the applicable Warranty Period listed below, the Product will be free from defects in material or workmanship under normal, non-commercial use ("Defects").

Warranty Period encompasses, as listed below, separate "Coverage Periods" for Parts and Labor, each Coverage Period to begin from the original date of Customer purchase. If Customer returns a defective Product (or any component thereof) during the applicable Warranty Period, QFX will, at its option, during the specified Coverage Periods for Parts and Labor (as applicable either: (i) repair the Product (or, as applicable, any component thereof) or (ii) replace the Product (or, as applicable, any component thereof) with a new or refurbished Product (or, as applicable, any component thereof), in either case free of charge to Customer for Parts and/or Labor (as applicable) during the specified Coverage Period only, and excluding applicable shipping charges (noted below), for which the Customer is responsible. The foregoing states the Customer's exclusive remedy and QFX sole liability for breach of the limited warranty contained herein.

This warranty covers only normal use. This warranty is not transferable. QFX is not responsible for warranty replacement should the QFX label or logo be removed or should the product fail to be properly maintained or fail to function properly as a result of misuse, abuse, immersion in liquids, improper installation, improper shipping, damage caused by disasters such as fire, flood, or service other than by QFX. In addition, this warranty excludes any Product (or, as applicable, any component thereof) that has been subject to or Defects resulting from: (a) any neglect or misuse by a Customer, an accident, improper application, violation of operating instructions for the Product, any other Customer-induced damage, or the alteration or removal of any Product serial number; (b) any modification or repair to Product (or, as applicable, any component thereof) by any party other than QFX or a party authorized in writing by QFX; (c) any damage to Product (or, as applicable, any component thereof) due to power surges, incorrect electrical voltage, misconnection to any device, or malfunction of any device used with the Product (or, as applicable, any component thereof); (d) cosmetic damage to the Product (or, as applicable, any component thereof) caused by normal wear and tear; (e) shipping damage that occurs while the Product is in transit; (f) damage caused by heat sources, sunlight, electromagnetic conditions, or other climatic conditions or (g) any acts of God.

Product is sold to Customer for personal, non-commercial use only. Product is not warranted for Customer's commercial or rental use. In addition, Product is not warranted against failure, and should not be used by Customer for any application where (i) there is a risk that any data stored on Product will be breached or otherwise compromised, or (ii) the data stored on Product is relied upon for medical or lifesaving applications. QFX disclaims any Warranty for any of the foregoing uses to the fullest extent permitted by law. Customer assumes any and all risks associated with such uses of Product, and agrees to indemnify QFX for any damages claimed against QFX for such uses.

EXCEPT FOR EXPRESS WARRANTIES STATED ABOVE AND TO THE MAXIMUM EXTENT PERMITTED BY LAW, THE PRODUCTS ARE PROVIDED "AS IS" AND QFX DISCLAIMS ALL OTHER WARRANTIES, INCLUDING WITHOUT LIMITATION ANY IMPLIED WARRANTY (i) OF MERCHANTABILITY, (ii) OF FITNESS FOR A PARTICULAR PURPOSE, OR (iii) OF NON-INFRINGEMENT OF THIRD PARTY RIGHTS. TO THE MAXIMUM EXTENT PERMITTED BY APPLICABLE LAW, IN NO EVENT WILL QFX BE LIABLE TO CUSTOMER OR ANY THIRD PARTY FOR ANY INDIRECT, SPECIAL, INCIDENTAL, CONSEQUENTIAL, EXEMPLARY OR PUNITIVE DAMAGES, INCLUDING, WITHOUT LIMITATION, ANY LOST PROFITS OR REVENUES, LOSS OR INACCURACY OF ANY DATA OR COST OF SUBSTITUTE GOODS, REGARDLESS OF THE THEORY OF LIABILITY (INCLUDING NEGLIGENCE) AND EVEN IF QFX HAS BEEN ADVISED OF THE POSSIBILITY OF SUCH DAMAGES, QFX AGGREGATE LIABILITY TO CUSTOMER FOR ACTUAL DIRECT DAMAGES FOR ANY CAUSE WHATSOEVER SHALL BE LIMITED TO THE CUMULATIVE PRODUCT FEES PAID BY THAT CUSTOMER FOR THE PRODUCTS CAUSING THE DAMAGES, IF ANY.

This Warranty gives Customer specific rights, and Customer may also have other rights that vary from jurisdiction to jurisdiction. Warning: Some Products may contain components that are small enough to be swallowed. Please keep out of reach of children. In order for the return to be processed, you must send the Product PREPAID to the address below in the original packaging or reasonable substitute to prevent damage and include: (1) a dated sales receipt (which must have a purchase date that falls in the Warranty Period specified in the table below) that indicates the place of purchase, model number of Product, and amount paid, (2) a detailed description of Customer's problem with Product, (3) Customer's full name, phone number, and return address, (3) all of the accessories that came with the Product package must be sent along with the main Product, (4) a cashier's check or money order payable to QFX, Inc., in the amount specified for the item in the product table below for return shipping and handling. If in the case you cannot provide a money order or cashier's check, you can contact The QFX Customer Support Representative to arrange payment via credit card. No returned Product will be shipped back to a PO BOX. If a returned Product is found to have no problem and/or does not include ALL of the requirements indicated above, it may be returned back to the customer and will not be processed.

**QFX USA® , Inc.**  
RMA Processing  
Customer Support Department  
2957 E. 46th Street | Vernon, CA 90058

support@qfxusa.com  
(800) 864-CLUB (2582) or (323) 864-6900  
qfxusa.com  
Hours of Operation: Monday - Friday, 9am - 5pm PST

All prices and details below are for US Destinations excluding, Hawaii, Alaska and Puerto Rico. For excluded destinations and NON US destinations, please contact The QFX Customer Support Department directly for additional shipping fees and return instructions.

If you do not find your Product below, your Product model conflicts with multiple categories, and/or are unsure of which category the Product you have purchased will fall under, please contact our Customer Support Department for further instruction.

In order to determine the exact shipping cost that must be included with your product or paid for the product being returned, please refer to the table below. Please find the product you wish to return by category or model number prefix. QFX will not provide any return or refund to any customer for merchandise and will only honor the Limited Warranty restrictions mentioned in this document.

Please make sure to follow all directions prior to shipping back your item. If you are not sure what the shipping cost for your item is, or if your item category conflicts in the table below, please feel free to contact the QFX Support Department for further assistance.

PRODUCT CATEGORY	HANDLING	LABOR	PARTS
Earphones, Headphones, Pocket Radios, & Small Bluetooth vSpeakers	\$5.00	1 Year	1 Year
Personal Stereos	\$10.00	1 Year	1 Year
Portable Radio/Cassette	\$15.00	1 Year	1 Year
Large Portable Radio Cassette	\$20.00	1 Year	1 Year
Mobile Audio	\$10.00	1 Year	1 Year
Pro Audio SBX Systems	\$75.00	1 Year	1 Year
Pro Audio PBX Systems	\$75.00	1 Year	1 Year
Televisions	\$25.00	1 Year	1 Year
Telephones	\$10.00	1 Year	1 Year

THE WARRANTY AND REMEDY PROVIDED ABOVE ARE EXCLUSIVE AND IN LIEU OF ALL OTHER EXPRESSED OR IMPLIED WARRANTIES INCLUDING, BUT NOT LIMITED TO, THE IMPLIED WARRANTIES OF MERCHANTABILITY, NON-INFRINGEMENT OR FITNESS FOR A PARTICULAR PURPOSE. SOME LAWS DO NOT ALLOW THE EXCLUSION OF IMPLIED WARRANTIES. IF THESE LAWS APPLY THEN ALL EXPRESSED OR IMPLIED WARRANTIES ARE LIMITED TO THE WARRANTY PERIOD IDENTIFIED ABOVE. UNLESS STATED HEREIN, ANY STATEMENT OR REPRESENTATIONS MADE BY ANY OTHER PERSONS OR FIRM ARE VOID. EXCEPT AS PROVIDED IN THIS WRITTEN WARRANTY, QFX SHALL NOT BE LIABLE FOR ANY LOSS, INCONVENIENCE, OR DAMAGE, INCLUDING DIRECT, SPECIAL, INCIDENTAL OR CONSEQUENTIAL DAMAGES, RESULTING FROM THE USE OR INABILITY TO USE THE QFX PRODUCT, WHETHER RESULTING FROM BREACH OF WARRANTY OR ANY OTHER LEGAL THEORY.

Some jurisdictions do not allow limitations on how long an implied warranty lasts, and some jurisdictions do not allow the exclusion or limitation of incidental or consequential damages, so the above limitations and exclusions may not apply to you. This warranty gives you special legal rights and you may have other rights which vary from jurisdiction to jurisdiction.

Copyright Protected 2024 ©



[www.qfxusa.com](http://www.qfxusa.com)



1-800-864-2582  
Mon-Fri 9AM - 5PM (PST)



support@qfxusa.com  
Mon-Fri 9AM - 5PM (PST)

# THANK YOU.

**QFX** Where the Party Begins!

We would love to hear about your PBX-5180 journey!  
Tag us **@QFXUSA** to share your stories.

FOLLOW US @QFXUSA

