

LMS-1560M

# QFX

WHERE THE PARTY BEGINS™



INSTRUCTION MANUAL

**SAFETY**

TO REDUCE THE RISK OF ELECTRIC SHOCK, DO NOT REMOVE THE COVER ON THIS SPEAKER. THERE ARE NO USER-SERVICEABLE PARTS INSIDE. REFER ALL SERVICING TO A QUALIFIED TECHNICIAN

To prevent fire or electric shock, do not expose this equipment to rain or moisture. Do not store or operate this product near any liquids, heat sources such as radiators, heat registers. Clean only with a dry cloth. Users should exhibit extra safety and follow all precautions as they are stated.

**LMS-1560M BATTERY**

The LMS-1560M can be operated on AC power or by using its internal rechargeable battery. The unit can be recharged while the power is switched to either ON or OFF position. Using the supplied adapter, fully recharge the speaker prior to its first use and then recharge it later whenever needed. While the battery is recharging, the battery indicator light is red. When the battery has been fully charged, the indicator light will turn off.

**LMS-1560M BLUETOOTH MODE**

Bluetooth Mode: Enable Bluetooth on your Bluetooth-enabled phone or other device. Find the Bluetooth name "QFX LMS-1560M" to connect. After a successful pairing, you can play the music from your phone and hear it play through the speaker wirelessly. You can later reconnect to Bluetooth automatically without needing to repeat the pairing process.

---

**LA SEGURIDAD**

PARA REDUCIR EL RIESGO DE DESCARGA ELÉCTRICA, NO quite la cubierta en este altavoz. NO HAY PARTES REPARABLES POR EL USUARIO ADENTRO. SOLICITE EL SERVICIO A UN TÉCNICO CALIFICADO.

Para evitar incendios o descargas eléctricas, no exponga este equipo a la lluvia ni a la humedad. No almacene ni opere este producto cerca de líquidos, fuentes de calor como radiadores, registros de calor. Limpie solamente con un paño seco. Los usuarios deben exhibir una seguridad adicional y seguir todas las precauciones tal como se indican.

**LMS-1560M BATERIA**

El LMS-1560M puede funcionar con alimentación de CA o utilizando su batería interna recargable. La unidad se puede recargar mientras la alimentación está en la posición ON u OFF. Utilizando el cable de CA suministrado, recargue completamente el altavoz antes de su primer uso y luego recárguelo más tarde cuando sea necesario. Mientras la batería se está recargando, la luz indicadora de la batería es roja. Cuando la batería se haya cargado por completo, la luz indicadora se apagará.

**LMS-1560M BLUETOOTH**

Modo de Bluetooth: Habilite Bluetooth en su teléfono u otro dispositivo habilitado para Bluetooth. Busque el nombre de Bluetooth "QFX LMS-1560M" para conectarse. Después de un emparejamiento exitoso, puede reproducir la música desde su teléfono y escucharla a través del altavoz de forma inalámbrica. Más tarde puede volver a conectarse a Bluetooth automáticamente sin necesidad de repetir el proceso de emparejamiento.

---

**SÉCURITÉ**

POUR RÉDUIRE LE RISQUE D'ÉLECTROCUTION, NE RETIREZ PAS LE COUVERCLE DE CETTE ENCEINTE. IL N'Y A AUCUNE PIÈCE RÉPARABLE PAR L'UTILISATEUR À L'INTÉRIEUR. RÉFÉREZ TOUTE RÉPARATION À UN TECHNICIEN QUALIFIÉ.

Pour éviter un incendie ou un choc électrique, n'exposez pas cet équipement à la pluie ou à

l'humidité. Ne stockez pas ou n'utilisez pas ce produit à proximité de liquides, de sources de chaleur telles que des radiateurs, des registres de chaleur. Nettoyez uniquement avec un chiffon sec. Les utilisateurs doivent faire preuve de plus de sécurité et suivre toutes les précautions telles qu'elles sont indiquées.

## BATTERIE LMS-1560M

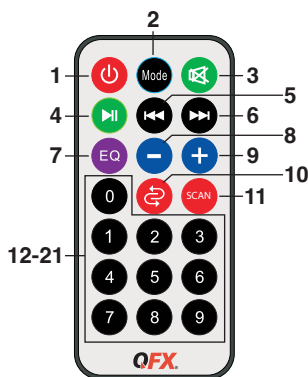
Le LMS-1560M peut fonctionner sur secteur ou en utilisant sa batterie interne rechargeable. L'appareil peut être rechargé alors que l'alimentation est en position ON ou OFF. À l'aide du cordon d'alimentation fourni, rechargez complètement l'enceinte avant sa première utilisation, puis rechargez-la plus tard si nécessaire. Pendant que la batterie se recharge, le voyant de la batterie est rouge. Lorsque la batterie est complètement chargée, le voyant s'éteint.

## MODE BLUETOOTH LMS-1560M

Mode Bluetooth : activez Bluetooth sur votre téléphone ou autre appareil compatible Bluetooth. Trouvez le nom Bluetooth "QFX LMS-1560M" pour vous connecter. Après un couplage réussi, vous pouvez écouter la musique de votre téléphone et l'entendre sans fil via le haut-parleur. Vous pouvez ensuite vous reconnecter automatiquement au Bluetooth sans avoir à répéter le processus d'appairage.

## LMS-1560MM REMOTE CONTROL

1. STANDBY: Select to put the LMS-1560MM in standby mode.
2. MODE: Toggle between USB/TF, FM, AUX or BT modes.
3. MUTE: Press to mute or unmute the sound.
4. PLAY/PAUSE: Select to play or pause music playback
5. PREVIOUS: Select previous track or station
6. NEXT: Select next track or station
7. EQ: Select desired EQ mode
8. VOL-: Reduces the master volume level
9. VOL+: Increases the master volume level
10. REPEAT: Repeat the currently playing music track.
11. SCAN: Press to scan radio stations while in FM Mode
- 12-21. "0-9" numbers for selecting a music track playing from USB/TF.



## MANDO A DISTANCIA LMS-1560MM

1. ESPERA: Seleccione para poner el LMS-1560MM en modo de espera.
2. MODO: Alterne entre los modos USB/TF, FM, AUX o BT.
3. MUTE: presione para silenciar o reactivar el sonido.
4. REPRODUCIR/PAUSAR: selecciona para reproducir o pausar la reproducción de música
5. ANTERIOR: Seleccione la pista o estación anterior
6. SIGUIENTE: selecciona la siguiente pista o estación
7. EQ: seleccione el modo EQ deseado
8. VOL-: reduce el nivel de volumen maestro
9. VOL+: aumenta el nivel de volumen maestro
10. REPETIR: repite la pista de música que se está reproduciendo actualmente.
11. SCAN: presione para buscar estaciones de radio mientras está en modo FM
- 12-21. Números "0-9" para seleccionar una pista de música que se reproduce desde USB/TF.

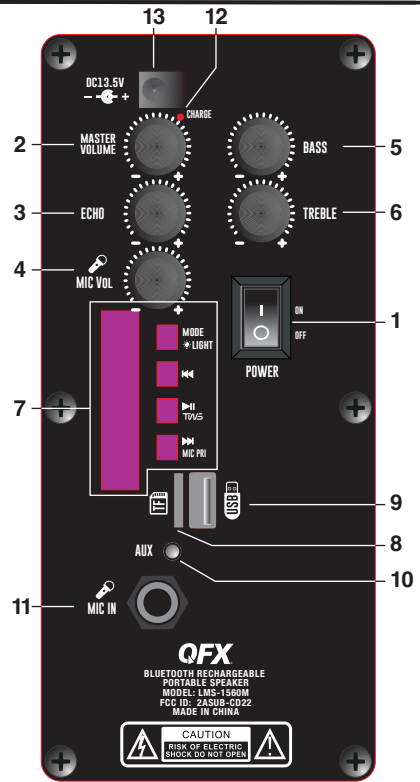
TÉLÉCOMMANDE LMS-1560MM

## TÉLÉCOMMANDE LMS-1560MM

1. STANDBY: Select to put the LMS-1560MM in standby mode.
2. MODE: Toggle between USB/TF, FM, AUX or BT modes.
3. MUTE: Press to mute or unmute the sound.
4. PLAY/PAUSE: Select to play or pause music playback
5. PREVIOUS: Select previous track or station
6. NEXT: Select next track or station
7. EQ: Select desired EQ mode
8. VOL-: Reduces the master volume level
9. VOL+: Increases the master volume level
10. REPEAT: Repeat the currently playing music track.
11. SCAN: Press to scan radio stations while in FM Mode
- 12-21. "0-9" numbers for selecting a music track playing from USB/TF.

## FUNCTIONS:

- POWER:** ON/OFF Power Switch
- VOLUME:** Master Volume Control Knob
- ECHO:** Microphone Echo Control Knob
- MIC. VOL:** Microphone Volume Control Knob
- BASS:** Bass Control Knob
- TREBLE:** Treble Control Knob
- Buttons and LED Display:**
  - **MODE LED Button:** Short-Press to Select AUX, USB/TF, FM or BT Modes. Press-and-Hold to Turn Party Light On or Off.
  - **◀ Button:** Press to Select Previous Track
  - **▶|| TWS Button:** Short-Press to Play/Pause Music. Press-and-Hold for TWS.
  - **▶▶ Button:** Press to Select Next Track
  - **LED Display Screen** is Located to the Left of the Four Buttons
- TF CARD:** TF Card Slot to Play MP3 Music
- USB:** USB Port to Play MP3 Music
- AUX:** 3.5mm Aux Input Jack
- MIC IN:** 1/4" Microphone Input Jack
- CHARGE:** Battery LED Indicator
- DC 13.5V:** Power Supply 13.5VDC Input



## FUNCIONES:

- ENCENDIDO:** Interruptor de encendido/apagado
- VOLUMEN:** perilla de control de volumen maestro
- ECHO:** perilla de control de eco del micrófono
- MIC. VOL:** perilla de control de volumen del micrófono
- GRAVES:** perilla de control de graves
- AGUDOS:** perilla de control de agudos
- Botones y pantalla LED:**
  - **Botón LED de MODO:** presione brevemente para seleccionar los modos AUX, USB/TF, FM o BT. Mantenga presionado para encender o apagar Party Light.
  - **Botón ◀:** presione para seleccionar la pista anterior
  - **Botón TWS ▶||:** Presione brevemente para reproducir/pausar música. Mantenga presionado para TWS.
  - **Botón ▶▶:** presione para seleccionar la siguiente pista
  - **La pantalla LED** se encuentra a la izquierda de los cuatro botones
- TARJETA TF:** ranura para tarjeta TF para reproducir música MP3
- USB:** puerto USB para reproducir música MP3
- AUX:** conector de entrada auxiliar de 3,5 mm
- ENTRADA DE MICRÓFONO:** Conector de entrada de micrófono de 1/4"
- CHARGE:** Indicador LED de batería
- CC 13,5 V:** entrada de fuente de alimentación de 13,5 V CC

## LES FONCTIONS:

- ALIMENTATION:** interrupteur marche/arrêt
- VOLUME:** bouton de contrôle du volume principal
- ECHO:** bouton de contrôle de l'écho du microphone
- MIC. VOL:** bouton de contrôle du volume du microphone
- BASS:** bouton de contrôle des basses
- TREBLE:** bouton de contrôle des aigus
- Botons et écran LED:**
  - **Bouton LED MODE:** appuyez brièvement pour sélectionner les modes AUX, USB/TF, FM ou BT. Appuyez et maintenez enfoncé pour allumer ou éteindre la lumière de fête.
  - Bouton ◀ : Appuyez pour sélectionner la piste précédente
  - **▶|| Bouton TWS :** appuyez brièvement pour lire/mettre en pause la musique. Appuyez et maintenez pour TWS.
  - Bouton ▶▶ : appuyez pour sélectionner la piste suivante
  - **L'écran d'affichage LED** est situé à gauche des quatre boutons
- CARTE TF:** Emplacement pour carte TF pour lire de la musique MP3
- USB:** port USB pour lire de la musique MP3
- AUX:** prise d'entrée auxiliaire de 3,5 mm
- MIC IN:** prise d'entrée microphone 1/4"
- CHARGE:** indicateur LED de la batterie
- DC 13.5V:** entrée d'alimentation 13.5VDC

## LMS-1560M LED DISPLAY

### Input Modes:

- The LED screen will display the input mode that is selected; USB/TF, BT, AUX or FM.
- When a USB flash drive or TF card is inserted into the USB/TF input, the unit will automatically switch to USB/TF mode and begin playing the MP3 audio files.

**Track Number:** It will also display the track number of the song currently playing from the USB drive/TF card.

**FM Mode:** The FM radio stations will also be displayed here. Short-press the ► button to auto scan and store all radio stations. Then use the ► or ◀ buttons to switch between the stored radio stations.

## LMS-1560M TRUE WIRELESS STEREO (TWS)

True Wireless Stereo (TWS) allows for two speakers of the same model to connect wirelessly in stereo. You will need two LMS-1560M speakers in order for TWS operation to function.

To set up TWS:

1. Turn on both LMS-1560M speakers, toggle the MODE button through various sources until you get to BLUETOOTH mode (you will see "BLUE" flashing on the LED screen).
2. To set up TWS operation, press the Play/Pause (►TWS) button on only one of the speakers for 3 seconds. Then both speakers will connect together.
3. Next, connect your Bluetooth-enabled phone to the speaker. Go to your phone Bluetooth settings, search and connect to Bluetooth name "QFX LMS-1560M".
4. Once the connection has been established, you can play music from your phone and enjoy True Wireless Stereo audio playing through your two LMS-1560M speakers.
5. To exit TWS mode, long press the Play/Pause (►TWS) button for 3 seconds to exit TWS.

---

## PANTALLA LED LMS-1560M

### Modos de entrada:

- La pantalla LED mostrará el modo de entrada seleccionado; USB/TF, BT, AUX o FM.
- Cuando se inserta una unidad flash USB o una tarjeta TF en la entrada USB/TF, la unidad cambiará automáticamente al modo USB/TF y comenzará a reproducir los archivos de audio MP3.

**Número de pista:** también mostrará el número de pista de la canción que se está reproduciendo actualmente desde la unidad USB/tarjeta TF.

**Modo FM:** Las estaciones de radio FM también se mostrarán aquí. Presione brevemente el botón ► para escanear automáticamente y almacenar todas las estaciones de radio. Luego use los botones ► o ◀ para cambiar entre las estaciones de radio almacenadas.

## LMS-1560M ESTÉREO INALÁMBRICO VERDADERO (TWS)

True Wireless Stereo (TWS) permite que dos altavoces del mismo modelo se conecten de forma inalámbrica en estéreo. Necesitará dos altavoces LMS-1560M para que funcione la operación TWS. Para configurar TWS:

1. Encienda ambos altavoces LMS-1560M, cambie el botón MODE a través de varias fuentes hasta llegar al modo BLUETOOTH (verá "AZUL" parpadeando en la pantalla LED).
2. Para configurar la operación TWS, presione el botón Reproducir/Pausar (►TWS) en solo uno de los altavoces durante 3 segundos. Entonces ambos altavoces se conectarán juntos.
3. A continuación, conecte su teléfono con Bluetooth al altavoz. Vaya a la configuración de Bluetooth de su teléfono, busque y conéctese al nombre de Bluetooth "QFX LMS-1560M".
4. Una vez que se haya establecido la conexión, puede reproducir música desde su teléfono y disfrutar de la reproducción de audio True Wireless Stereo a través de sus dos altavoces LMS-1560M.
5. Para salir del modo TWS, mantenga presionado el botón Reproducir/Pausar (►TWS) durante 3 segundos para salir de TWS.

## AFFICHEUR LED LMS-1560M

### Modes d'entrée:

- L'écran LED affichera le mode d'entrée sélectionné ; USB/TF, BT, AUX ou FM.
- Lorsqu'une clé USB ou une carte TF est insérée dans l'entrée USB/TF, l'appareil passe automatiquement en mode USB/TF et commence à lire les fichiers audio MP3.

**Numéro de piste:** Il affichera également le numéro de piste de la chanson en cours de lecture à partir de la clé USB/carte TF.

**Mode FM:** Les stations de radio FM seront également affichées ici. Appuyez brièvement sur le bouton ►► pour rechercher et mémoriser automatiquement toutes les stations de radio. Utilisez ensuite les boutons ►► ou ◀◀ pour basculer entre les stations de radio mémorisées.

## LMS-1560M VÉRITABLE STÉRÉO SANS FIL (TWS)

True Wireless Stereo (TWS) permet à deux haut-parleurs du même modèle de se connecter sans fil en stéréo. Vous aurez besoin de deux haut-parleurs LMS-1560M pour que le fonctionnement TWS fonctionne. Pour configurer TWS :

1. Allumez les deux haut-parleurs LMS-1560M, basculez le bouton MODE entre différentes sources jusqu'à ce que vous arriviez au mode BLUETOOTH (vous verrez « BLEU » clignoter sur l'écran LED).
2. Pour configurer le fonctionnement TWS, appuyez sur le bouton Lecture/Pause (►► TWS) sur une seule des enceintes pendant 3 secondes. Ensuite, les deux haut-parleurs se connecteront ensemble.
3. Ensuite, connectez votre téléphone compatible Bluetooth au haut-parleur. Accédez aux paramètres Bluetooth de votre téléphone, recherchez et connectez-vous au nom Bluetooth "QFX LMS-1560M".
4. Une fois la connexion établie, vous pouvez écouter de la musique à partir de votre téléphone et profiter de la lecture audio True Wireless Stereo via vos deux haut-parleurs LMS-1560M.
5. Pour quitter le mode TWS, appuyez longuement sur le bouton Lecture/Pause (►► TWS) pendant 3 secondes pour quitter TWS.

**QFX** Where the Party Begins!

We would love to hear about your LMS-1560M journey!  
Tag us @QFXUSA to share your stories.

FOLLOW US @QFXUSA





## LIMITED PRODUCT WARRANTY POLICY

Before returning your Product for service under this Warranty, please (i) read the instruction manual carefully and visit our website at [www.qfxusa.com](http://www.qfxusa.com) for Product updates and extended support documentation (e.g., Common Troubleshooting Guides); (ii) if you are still having trouble with your Product, please contact the QFX Customer Support Department.

Subject to the terms and conditions herein, QFX, Inc. (herein after called "QFX") warrants to the original purchaser of the Product ("Customer") that for the applicable Warranty Period listed below, the Product will be free from defects in material or workmanship under normal, non-commercial use ("Defects").

Warranty Period encompasses, as listed below, separate "Coverage Periods" for Parts and Labor, each Coverage Period to begin from the original date of Customer purchase. If Customer returns a defective Product (or any component thereof) during the applicable Warranty Period, QFX will, at its option, during the specified Coverage Periods for Parts and Labor (as applicable either: (i) repair the Product (or, as applicable, any component thereof) or (ii) replace the Product (or, as applicable, any component thereof) with a new or refurbished Product (or, as applicable, any component thereof), in either case free of charge to Customer for Parts and/or Labor (as applicable) during the specified Coverage Period only, and excluding applicable shipping charges (noted below), for which the Customer is responsible. The foregoing states the Customer's exclusive remedy and QFX sole liability for breach of the limited warranty contained herein.

This warranty covers only normal use. This warranty is not transferable. QFX is not responsible for warranty replacement should the QFX label or logo be removed or should the product fail to be properly maintained or fail to function properly as a result of misuse, abuse, immersion in liquids, improper installation, improper shipping, damage caused by disasters such as fire, flood, or service other than by QFX. In addition, this warranty excludes any Product (or, as applicable, any component thereof) that has been subject to or Defects resulting from: (a) any neglect or misuse by a Customer, an accident, improper application, violation of operating instructions for the Product, any other Customer-induced damage, or the alteration or removal of any Product serial number; (b) any modification or repair to Product (or, as applicable, any component thereof) by any party other than QFX or a party authorized in writing by QFX; (c) any damage to Product (or, as applicable, any component thereof) due to power surges, incorrect electrical voltage, misconnection to any device, or malfunction of any device used with the Product (or, as applicable, any component thereof); (d) cosmetic damage to the Product (or, as applicable, any component thereof) caused by normal wear and tear; (e) shipping damage that occurs while the Product is in transit; (f) damage caused by heat sources, sunlight, electromagnetic conditions, or other climatic conditions or (g) any acts of God.

Product is sold to Customer for personal, non-commercial use only. Product is not warranted for Customer's commercial or rental use. In addition, Product is not warranted against failure, and should not be used by Customer for any application where (i) there is a risk that any data stored on Product will be breached or otherwise compromised, or (ii) the data stored on Product is relied upon for medical or lifesaving applications. QFX disclaims any Warranty for any of the foregoing uses to the fullest extent permitted by law. Customer assumes any and all risks associated with such uses of Product, and agrees to indemnify QFX for any damages claimed against QFX for such uses.

EXCEPT FOR EXPRESS WARRANTIES STATED ABOVE AND TO THE MAXIMUM EXTENT PERMITTED BY LAW, THE PRODUCTS ARE PROVIDED "AS IS" AND QFX DISCLAIMS ALL OTHER WARRANTIES, INCLUDING WITHOUT LIMITATION ANY IMPLIED WARRANTY (i) OF MERCHANTABILITY, (ii) OF FITNESS FOR A PARTICULAR PURPOSE, OR (iii) OF NON-INFRINGEMENT OF THIRD PARTY RIGHTS. TO THE MAXIMUM EXTENT PERMITTED BY APPLICABLE LAW, IN NO EVENT WILL QFX BE LIABLE TO CUSTOMER OR ANY THIRD PARTY FOR ANY INDIRECT, SPECIAL, INCIDENTAL, CONSEQUENTIAL, EXEMPLARY OR PUNITIVE DAMAGES, INCLUDING, WITHOUT LIMITATION, ANY LOST PROFITS OR REVENUES, LOSS OR INACCURACY OF ANY DATA OR COST OF SUBSTITUTE GOODS, REGARDLESS OF THE THEORY OF LIABILITY (INCLUDING NEGLIGENCE) AND EVEN IF QFX HAS BEEN ADVISED OF THE POSSIBILITY OF SUCH DAMAGES, QFX AGGREGATE LIABILITY TO CUSTOMER FOR ACTUAL DIRECT DAMAGES FOR ANY CAUSE WHATSOEVER SHALL BE LIMITED TO THE CUMULATIVE PRODUCT FEES PAID BY THAT CUSTOMER FOR THE PRODUCTS CAUSING THE DAMAGES, IF ANY.

This Warranty gives Customer specific rights, and Customer may also have other rights that vary from jurisdiction to jurisdiction. Warning: Some Products may contain components that are small enough to be swallowed. Please keep out of reach of children. In order for the return to be processed, you must send the Product PREPAID to the address below in the original packaging or reasonable substitute to prevent damage and include: (1) a dated sales receipt (which must have a purchase date that falls in the Warranty Period specified in the table below) that indicates the place of purchase, model number of Product, and amount paid, (2) a detailed description of Customer's problem with Product, (3) Customer's full name, phone number, and return address, (3) all of the accessories that came with the Product package must be sent along with the main Product, (4) a cashier's check or money order payable to QFX, Inc., in the amount specified for the item in the product table below for return shipping and handling. If in the case you cannot provide a money order or cashier's check, you can contact The QFX Customer Support Representative to arrange payment via credit card. No returned Product will be shipped back to a PO BOX. If a returned Product is found to have no problem and/or does not include ALL of the requirements indicated above, it may be returned back to the customer and will not be processed.

**QFX USA® , Inc.**  
RMA Processing  
Customer Support Department  
2957 E. 46th Street | Vernon, CA 90058

support@qfxusa.com  
(800) 864-CLUB (2582) or (323) 864-6900  
qfxusa.com  
Hours of Operation: Monday - Friday, 9am - 5pm PST

All prices and details below are for US Destinations excluding, Hawaii, Alaska and Puerto Rico. For excluded destinations and NON US destinations, please contact The QFX Customer Support Department directly for additional shipping fees and return instructions.

If you do not find your Product below, your Product model conflicts with multiple categories, and/or are unsure of which category the Product you have purchased will fall under, please contact our Customer Support Department for further instruction.

In order to determine the exact shipping cost that must be included with your product or paid for the product being returned, please refer to the table below. Please find the product you wish to return by category or model number prefix. QFX will not provide any return or refund to any customer for merchandise and will only honor the Limited Warranty restrictions mentioned in this document.

Please make sure to follow all directions prior to shipping back your item. If you are not sure what the shipping cost for your item is, or if your item category conflicts in the table below, please feel free to contact the QFX Support Department for further assistance.

PRODUCT CATEGORY	HANDLING	LABOR	PARTS
Earphones, Headphones, Pocket Radios, & Small Bluetooth vSpeakers	\$5.00	1 Year	1 Year
Personal Stereos	\$10.00	1 Year	1 Year
Portable Radio/Cassette	\$15.00	1 Year	1 Year
Large Portable Radio Cassette	\$20.00	1 Year	1 Year
Mobile Audio	\$10.00	1 Year	1 Year
Pro Audio SBX Systems	\$75.00	1 Year	1 Year
Pro Audio PBX Systems	\$75.00	1 Year	1 Year
Televisions	\$25.00	1 Year	1 Year
Telephones	\$10.00	1 Year	1 Year

THE WARRANTY AND REMEDY PROVIDED ABOVE ARE EXCLUSIVE AND IN LIEU OF ALL OTHER EXPRESSED OR IMPLIED WARRANTIES INCLUDING, BUT NOT LIMITED TO, THE IMPLIED WARRANTIES OF MERCHANTABILITY, NON-INFRINGEMENT OR FITNESS FOR A PARTICULAR PURPOSE. SOME LAWS DO NOT ALLOW THE EXCLUSION OF IMPLIED WARRANTIES. IF THESE LAWS APPLY THEN ALL EXPRESSED OR IMPLIED WARRANTIES ARE LIMITED TO THE WARRANTY PERIOD IDENTIFIED ABOVE. UNLESS STATED HEREIN, ANY STATEMENT OR REPRESENTATIONS MADE BY ANY OTHER PERSONS OR FIRM ARE VOID. EXCEPT AS PROVIDED IN THIS WRITTEN WARRANTY, QFX SHALL NOT BE LIABLE FOR ANY LOSS, INCONVENIENCE, OR DAMAGE, INCLUDING DIRECT, SPECIAL, INCIDENTAL OR CONSEQUENTIAL DAMAGES, RESULTING FROM THE USE OR INABILITY TO USE THE QFX PRODUCT, WHETHER RESULTING FROM BREACH OF WARRANTY OR ANY OTHER LEGAL THEORY.

Some jurisdictions do not allow limitations on how long an implied warranty lasts, and some jurisdictions do not allow the exclusion or limitation of incidental or consequential damages, so the above limitations and exclusions may not apply to you. This warranty gives you special legal rights and you may have other rights which vary from jurisdiction to jurisdiction.

Copyright Protected 2022 ©



[www.qfxusa.com](http://www.qfxusa.com)



**1-800-864-CLUB (2582)**  
**Mon-Fri 9AM - 5PM (PST)**



**support@qfxusa.com**  
**Mon-Fri 9AM - 5PM (PST)**