

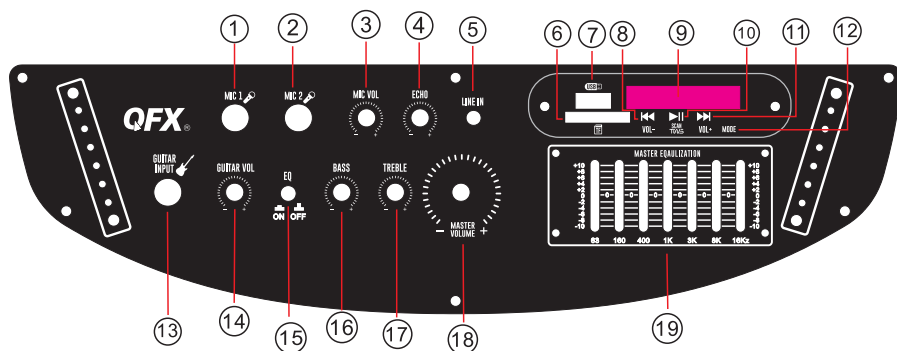
SBX-212W

QFX

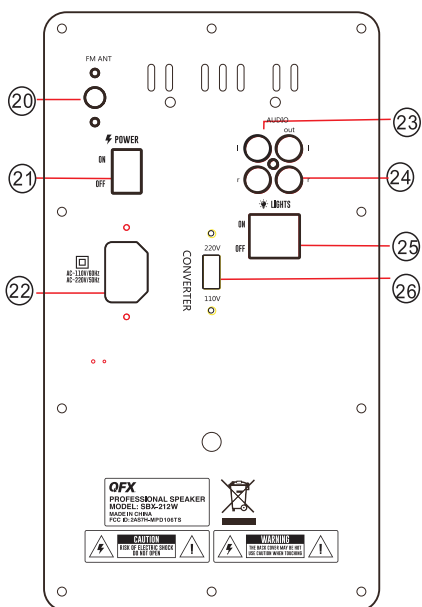
WHERE THE PARTY BEGINS™



INSTRUCTION MANUAL



1. Mic 1 input jack
2. Mic 2 input jack
3. Mic volume control
4. Echo volume control
5. Line-in
6. SD input jack
7. USB input jack
8. Prev key/volume down
9. Led display
10. Play/pause
11. Next key/volume up
12. Mode key
13. Guitar input jck
14. Guitar volume control
15. EQ switch
16. Bass volume control
17. Treble volume control
18. Main volume control
19. Master equalization
20. FM antenna
21. Power switch
22. AC input
23. Audio in
24. Audio out
25. LED light
26. Converter



- 1.Touch screen
2. HDTV Jack
3. Volume down
4. Previous page
5. Home screen button
6. Working APP
7. Volume up
8. TF Jack
9. USB Jack



Features

- Plays MP3 Files stored in your SD Card or USB Disk Drive or External audio device
- FM Radio
- Bluetooth Function
- Line in
- Mic Jack, to connect Wired Microphone
- Guitar Jack, to connect Guitar and play through speaker
- With Infrared remote control for convenience.
- LED LIGHT

Connecting Unit

- Connect one end to the unit and the plug end to socket
- Switch"on" power switch, backside of unit.

Volume Control

- Volume can be controlled from Unit or remote control.
- Maximum volume on remote control will be to the level set on unit through rotary volume control.
- From the remote press Vol- for Down or Vol+ for up.
- When connected to your smartphone wirelessly, volume can be controlled from unit and your smartphone both.
- The sound output quality off the speakers will depend on the quality of the MP3 files. Volume from remote will be maximum to the level set manually through unit volume Knob

Using Line-in

- Use "MODE" button on unit main panel to select line in.
- Use supplied cable to connect your audio device, one end to audio device earphone jack and other end to unit LINE INPUT.

Playing MP3 Files through the Speaker using the SD Card or the USB Stick

Use "MODE" Button on unit to switch among USB/SD/AUX IN/FM/Bluetooth function. On Unit, USB or SD whichever is plugged later will play, plug in your USB Disk and/or SD Card in the slot provided. Please make sure you use the correct file format in your media devices-MP3 FILES ONLY. If your media files does not play, press the ►|| (play/pause). Please ensure that your media is properly connected and that your files are Mp3 format, or that the MODE button is on the correct source. Press ◀ to listen to the previous track and to skip ►► to the next track from unit control panel or remote control.

To Pause a track, press the ►|| button from the control panel or remote control. To remove pause, press button again.

Please remember to turn off the power of the Speaker before removing the USB Disk or SD Card

Listening to the FM Radio from the Speaker

- Use "MODE" button on unit main panel to select FM.
- From the unit control panel or from remote control, press |◀◀/▶▶| to manually access the stations up or down.
- "Antenna" to be used for better reception of FM stations

Using Bluetooth function

- Use "MODE" button to select Bluetooth function, when Bluetooth function is on, there is a Di-Di sound you can hear.
- From your external device scan for "QFX SBX-212W", select this option and start pairing.
- Use your smartphone to change track.
- Volume can be controlled from your smartphone, main unit or unit remote control.

Using Recording Function

- Longpress "MODE" key on the unit, then start to record by microphone.
- press "►||" key to play recording.

Using Microphone

- When using Microphone – plug your microphone into the microphone jack on unit main control panel.
- Use the MIC VOL knob to control the voice level of the microphone.
- Use the "ECHO" knob to control microphone echo

Using Guitar Jack

When using Guitar – plug your Guitar into the Guitar jack on unit main control panel.

Use the Guitar VOL knob to control the volume level of the Guitar.

LED LIGHT

- Switch on the back panel to turn on/ off led light

Wifi basic specification

LCD	15.4"AU Screen
pixel	1200xRGBx800pexel
display mode	16:9
input voltage	DC10V—DC16V;
working current	800 Ma-1000Ma ±10%

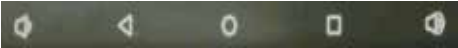
Wifi hardware specification

CPU	Rock Chip RK3128 Quad-Core Cortex-A7 Quad-Core GPU
basic frequency	1.3 GHz
Memory	DDR3 1G
Built-in storage capacity	NAND FLASH 8GB/16GB (optional)
Touch screen	capacitive touch(multi-point touch)
internet	with Wifi module, support wi-fi 802.11b/g/n protocol
interface device	HDMI, 720P output
	Two-in-one SD card with maximum support of 32GB
	USB
	L/R audio output(500-800MV)
Audio	MP3,WMA,WAV,andmore formats
video	Support the 1080P decoding of multiple video formats WMV,AVI,MPEG4, YouTube and other online video, up video playback, Flash10.1 playback
picture	Support JPG, BMP, PNG and other image formats browsing slide play/image magnification function

Wifi software specification

operating system	Android 11.1
Basic software function	Web browsing, chat, email, e-books, resource
language support	multi-language
functional characteristics	support wifi display

Wifi repeater operation

USB/SD Operation	Insert USB/SD, open the resource manager, and select play content
APK software installation	W WIFI Download the installation or USB/SD installation
language option	Setting - language and input method - multinational language selection
virtual key	 Volume - Previous page Home key Working APP Volume +
Wifi connecting	Setting - wifi - choose the corresponding internet equipment - enter password - connected
Time & date	Setting - select time zone, open Automatic date time & Automatic date zone
Karaoke operation:	Online and offline karaoke songs can be selected for original accompaniment
APK remove	Find the APP which u need to delete, long press it until there is remove on the top of screen, drag it to the remove
Music or video download	Download music APP - find the music which u need to download or download music from browser
Sleep mode (under long-term unused)	Setting - display - sleep - choose duration

Karaoke operation

Online and offline karaoke songs can be selected for original accompaniment.

Online broadcast supports four ways to choose songs:

- ① Popular recommendation, which belongs to pop songs.
- ② In search, you can input the first letter of the singer or song name in the search bar to search for the song.
- ③ Singers light up songs and choose their favorite singers.
- ④ Classify songs and choose multinational songs.

*this is normal the screen started jumping when connected the HDMI cable ,and will go after touching the screen once



TWS CONNECTION

TWS connection: TWS Connection is only for two speakers of the same make and model.

- 1.Enable Bluetooth mode on both speakers.
- 2.Press and hold the **TWS** (MODE) button on one of the speakers to sync both units for 3 seconds (they must be the same make and model to function).
- 3 .On your mobile device under the Bluetooth menu, search for QFX SBX-212W and connect.
4. Open your favorite music app and enjoy True Wireless Stereo.
5. To Exit TWS press and hold the **TWS** button.



LIMITED PRODUCT WARRANTY POLICY

Before returning your Product for service under this Warranty, please (i) read the instruction manual carefully and visit our website at www.qfxusa.com for Product updates and extended support documentation (e.g., Common Troubleshooting Guides); (ii) if you are still having trouble with your Product, please contact the QFX Customer Support Department.

Subject to the terms and conditions herein, QFX, Inc. (herein after called "QFX") warrants to the original purchaser of the Product ("Customer") that for the applicable Warranty Period listed below, the Product will be free from defects in material or workmanship under normal, non-commercial use ("Defects").

Warranty Period encompasses, as listed below, separate "Coverage Periods" for Parts and Labor, each Coverage Period to begin from the original date of Customer purchase. If Customer returns a defective Product (or any component thereof) during the applicable Warranty Period, QFX will, at its option, during the specified Coverage Periods for Parts and Labor (as applicable either: (i) repair the Product (or, as applicable, any component thereof) or (ii) replace the Product (or, as applicable, any component thereof) with a new or refurbished Product (or, as applicable, any component thereof), in either case free of charge to Customer for Parts and/or Labor (as applicable) during the specified Coverage Period only, and excluding applicable shipping charges (noted below), for which the Customer is responsible. The foregoing states the Customer's exclusive remedy and QFX sole liability for breach of the limited warranty contained herein.





This warranty covers only normal use. This warranty is not transferable. QFX is not responsible for warranty replacement should the QFX label or logo be removed or should the product fail to be properly maintained or fail to function properly as a result of misuse, abuse, immersion in liquids, improper installation, improper shipping, damage caused by disasters such as fire, flood, or service other than by QFX. In addition, this warranty excludes any Product (or, as applicable, any component thereof) that has been subject to or Defects resulting from: (a) any neglect or misuse by a Customer, an accident, improper application, violation of operating instructions for the Product, any other Customer-induced damage, or the alteration or removal of any Product serial number; (b) any modification or repair to Product (or, as applicable, any component thereof) by any party other than QFX or a party authorized in writing by QFX; (c) any damage to Product (or, as applicable, any component thereof) due to power surges, incorrect electrical voltage, misconnection to any device, or malfunction of any device used with the Product (or, as applicable, any component thereof); (d) cosmetic damage to the Product (or, as applicable, any component thereof) caused by normal wear and tear; (e) shipping damage that occurs while the Product is in transit; (f) damage caused by heat sources, sunlight, electromagnetic conditions, or other climatic conditions or (g) any acts of God.

Product is sold to Customer for personal, non-commercial use only. Product is not warranted for Customer's commercial or rental use. In addition, Product is not warranted against failure, and should not be used by Customer for any application where (i) there is a risk that any data stored on Product will be breached or otherwise compromised, or (ii) the date stored on Product is relied upon for medical or lifesaving applications. QFX disclaims any Warranty for any of the foregoing uses to the fullest extent permitted by law. Customer assumes any and all risks associated with such uses of Product, and agrees to indemnify QFX for any damages claimed against QFX for such uses.

EXCEPT FOR EXPRESS WARRANTIES STATED ABOVE AND TO THE MAXIMUM EXTENT PERMITTED BY LAW, THE PRODUCTS ARE PROVIDED "AS IS" AND QFX DISCLAIMS ALL OTHER WARRANTIES, INCLUDING WITHOUT LIMITATION ANY IMPLIED WARRANTY (i) OF MERCHANTABILITY, (ii) OF FITNESS FOR A PARTICULAR PURPOSE, OR (iii) OF NON-INFRINGEMENT OF THIRD PARTY RIGHTS. TO THE MAXIMUM EXTENT PERMITTED BY APPLICABLE LAW, IN NO EVENT WILL QFX BE LIABLE TO CUSTOMER OR ANY THIRD PARTY FOR ANY INDIRECT, SPECIAL, INCIDENTAL, CONSEQUENTIAL, EXEMPLARY OR PUNITIVE DAMAGES, INCLUDING, WITHOUT LIMITATION, ANY LOST PROFITS OR REVENUES, LOSS OR INACCURACY OF ANY DATA OR COST OF SUBSTITUTE GOODS, REGARDLESS OF THE THEORY OF LIABILITY (INCLUDING NEGLIGENCE) AND EVEN IF QFX HAS BEEN ADVISED OF THE POSSIBILITY OF SUCH DAMAGES, QFX AGGREGATE LIABILITY TO CUSTOMER FOR ACTUAL DIRECT DAMAGES FOR ANY CAUSE WHATSOEVER SHALL BE LIMITED TO THE CUMULATIVE PRODUCT FEES PAID BY THAT CUSTOMER FOR THE PRODUCTS CAUSING THE DAMAGES, IF ANY.

This Warranty gives Customer specific rights, and Customer may also have other rights that vary from jurisdiction to jurisdiction. Warning: Some Products may contain components that are small enough to be swallowed. Please keep out of reach of children. In order for the return to be processed, you must send the Product PREPAID to the address below in the original packaging or reasonable substitute to prevent damage and include: (1) a dated sales receipt (which must have a purchase date that falls in the Warranty Period specified in the table below) that indicates the place of purchase, model number of Product, and amount paid, (2) a detailed description of Customer's problem with Product, (3) Customer's full name, phone number, and return address, (3) all of the accessories that came with the Product package must be sent along with the main Product, (4) a cashier's check or money order payable to QFX, Inc., in the amount specified for the item in the product table below for return shipping and handling. If in the case you cannot provide a money order or cashier's check, you can contact The QFX Customer Support Representative to arrange payment via credit card. No returned Product will be shipped back to a PO BOX. If a returned Product is found to have no problem and/or does not include ALL of the requirements indicated above, it may be returned back to the customer and will not be processed.

QFX USA®, Inc.
RMA Processing
Customer Support Department
2957 E. 46th Street | Vernon, CA 90058

 support@qfxusa.com
 (800) 864-CLUB (2582) or (323) 864-6900
 qfxusa.com
 Hours of Operation: Monday - Friday, 9am - 5pm PST

All prices and details below are for US Destinations excluding, Hawaii, Alaska and Puerto Rico. For excluded destinations and NON US destinations, please contact The QFX Customer Support Department directly for additional shipping fees and return instructions.

If you do not find your Product below, your Product model conflicts with multiple categories, and/or are unsure of which category the Product you have purchased will fall under, please contact our Customer Support Department for further instruction.

In order to determine the exact shipping cost that must be included with your product or paid for the product being returned, please refer to the table below. Please find the product you wish to return by category or model number prefix. QFX will not provide any return or refund to any customer for merchandise and will only honor the Limited Warranty restrictions mentioned in this document.

Please make sure to follow all directions prior to shipping back your item. If you are not sure what the shipping cost for your item is, or if your item category conflicts in the table below, please feel free to contact the QFX Support Department for further assistance.

PRODUCT CATEGORY	HANDLING	LABOR	PARTS
Earphones, Headphones, Pocket Radios, & Small Bluetooth vSpeakers	\$5.00	1 Year	1 Year
Personal Stereos	\$10.00	1 Year	1 Year
Portable Radio/Cassette	\$15.00	1 Year	1 Year
Large Portable Radio Cassette	\$20.00	1 Year	1 Year
Mobile Audio	\$10.00	1 Year	1 Year
Pro Audio SBX Systems	\$75.00	1 Year	1 Year
Pro Audio PBX Systems	\$75.00	1 Year	1 Year
Televisions	\$25.00	1 Year	1 Year
Telephones	\$10.00	1 Year	1 Year

THE WARRANTY AND REMEDY PROVIDED ABOVE ARE EXCLUSIVE AND IN LIEU OF ALL OTHER EXPRESSED OR IMPLIED WARRANTIES INCLUDING, BUT NOT LIMITED TO, THE IMPLIED WARRANTIES OF MERCHANTABILITY, NON-INFRINGEMENT OR FITNESS FOR A PARTICULAR PURPOSE. SOME LAWS DO NOT ALLOW THE EXCLUSION OF IMPLIED WARRANTIES. IF THESE LAWS APPLY, THEN ALL EXPRESSED OR IMPLIED WARRANTIES ARE LIMITED TO THE WARRANTY PERIOD IDENTIFIED ABOVE. UNLESS STATED HEREIN, ANY STATEMENT OR REPRESENTATIONS MADE BY ANY OTHER PERSONS OR FIRM ARE VOID. EXCEPT AS PROVIDED IN THIS WRITTEN WARRANTY, QFX SHALL NOT BE LIABLE FOR ANY LOSS, INCONVENIENCE, OR DAMAGE, INCLUDING DIRECT, SPECIAL, INCIDENTAL OR CONSEQUENTIAL DAMAGES, RESULTING FROM THE USE OR INABILITY TO USE THE QFX PRODUCT, WHETHER RESULTING FROM BREACH OF WARRANTY OR ANY OTHER LEGAL THEORY.

Some jurisdictions do not allow limitations on how long an implied warranty lasts, and some jurisdictions do not allow the exclusion or limitation of incidental or consequential damages, so the above limitations and exclusions may not apply to you. This warranty gives you special legal rights and you may have other rights which vary from jurisdiction to jurisdiction.

Copyright Protected 2024 ©


1-800-864-2582
Mon-Fri 9AM - 5PM (PST)


support@qfxusa.com
Mon-Fri 9AM - 5PM (PST)


www.qfxusa.com

THANK YOU.

QFX Where the Party Begins!

We would love to hear about your SBX-212W journey!
Tag us **@QFXUSA** to share your stories.

FOLLOW US @QFXUSA

