

LMS-12

# QFX

WHERE THE PARTY BEGINS™



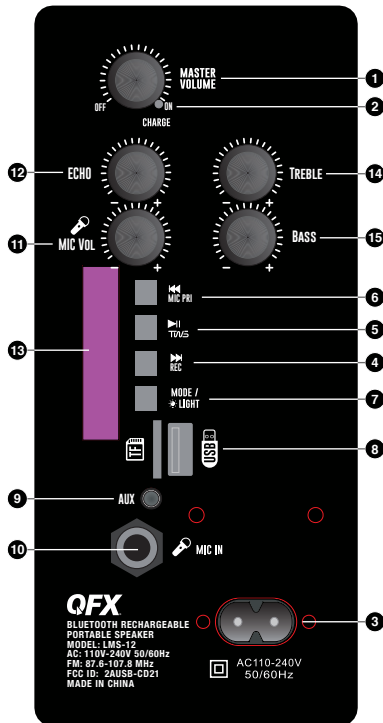
INSTRUCTION MANUAL

## FUNCTIONS:

1. POWER/MASTER VOLUME: Turn the volume knob to turn ON/OFF the unit. Use the same knob to increase/decrease the overall volume.
2. CHARGE LIGHT: Battery charge light indicator.
3. CHARGING PORT: Connect the provided AC cable to recharge the unit (AC 110-240V, 50/60Hz)
4. NEXT/REC: Press to select next track or FM channel. Press and hold to begin recording the microphone signal. Press again to stop recording. The recordings will be saved to the USB drive or TF card.
5. PLAY/TWS: Press to play or pause audio track. In FM Mode press to auto scan FM channels. Press and hold for TWS sync.
6. PREVIOUS/MIC PRI: Press to select previous track or FM channel. Press to enable microphone priority mode over music.
7. MODE/LED: Press to select the Bluetooth, AUX/USB/TF, or FM function. Press and hold to activate the Liquid Motion party lights.
8. USB/TF PORTS: Insert a USB drive or TF card (with .mp3 music) for music playback. Record the microphone signal directly to the USB drive or TF card.
9. AUX: Connect an external audio device using a TRS 3.5mm audio cable.
10. MIC INPUT: Connect a microphone using a TRS 6.35mm mic cable.
11. MIC VOL: Increase/decrease the mic volume.
12. MIC ECHO: Add echo to the microphone signal
13. LED DISPLAY: Displays current function.
14. TREBLE: Boost the treble frequencies for clarity.
15. BASS: Boost the bass frequencies for a fuller sound.

1. ENCENDIDO/VOLUMEN MAESTRO: Gire la perilla de volumen para ENCENDER/APAGAR la unidad. Use la misma perilla para aumentar/disminuir el volumen general.
2. LUZ DE CARGA: Indicador luminoso de carga de la batería.
3. PUERTO DE CARGA: conecte el cable de CA provisto para recargar la unidad (CA 110-240 V, 50/60 Hz)
4. NEXT/REC: presione para seleccionar la siguiente pista o canal FM. Mantenga presionado para comenzar a grabar la señal del micrófono. Pulse de nuevo para detener la grabación. Las grabaciones se guardarán en la unidad USB o en la tarjeta TF.
5. PLAY/TWS: Presione para reproducir o pausar la pista de audio. En el modo FM, presione para escanear automáticamente los canales FM. Mantenga presionado para sincronizar TWS.
6. PREVIOUS/MIC PRI: presione para seleccionar la pista anterior o el canal FM. Presione para habilitar el modo de prioridad del micrófono sobre la música.
7. MODE/LED: presione para seleccionar la función Bluetooth, AUX/USB/TF o FM. Mantenga presionado para activar las luces de fiesta Liquid Motion.
8. PUERTOS USB/TF: inserte una tarjeta USB o TF (con contenido de música .mp3) para reproducir música. Grabe la señal del micrófono directamente en la tarjeta USB o TF.
9. AUX: conecte un dispositivo de audio externo mediante un cable de audio TRS de 3,5 mm.
10. ENTRADA DE MICRÓFONO: conecte un micrófono mediante un cable de micrófono TRS de 6,35 mm.
11. MIC VOL: aumenta/disminuye el volumen del micrófono.
12. MIC ECHO: agrega eco a la señal del micrófono
13. PANTALLA LED: Muestra la función actual.
14. TREBLE: aumenta las frecuencias de los agudos para mayor claridad.
15. GRAVES: aumenta las frecuencias bajas para un sonido más completo.

1. POWER/MASTER VOLUME : Tournez le bouton de volume pour allumer/éteindre l'appareil. Utilisez le même bouton pour augmenter/diminuer le volume global.
2. VOYANT DE CHARGE : Voyant de charge de la batterie.
3. PORT DE CHARGE : connectez le câble CA fourni pour recharger l'appareil (CA 110-240 V, 50/60 Hz)
4. NEXT/REC : Appuyez pour sélectionner la piste ou la chaîne FM suivante. Maintenez enfoncé pour commencer à enregistrer le signal du microphone. Appuyez à nouveau pour arrêter l'enregistrement. Les enregistrements seront sauvegardés sur la clé USB ou la carte TF.
5. PLAY/TWS : Appuyez pour lire ou mettre en pause la piste audio. En mode FM, appuyez pour balayer automatiquement les chaînes FM. Appuyez et maintenez pour la synchronisation TWS.
6. PREVIOUS/MIC PRI : Appuyez pour sélectionner la piste ou le canal FM précédent. Appuyez pour activer le mode de priorité du microphone sur la musique.
7. MODE/LED : Appuyez pour sélectionner la fonction Bluetooth, AUX/USB/TF ou FM. Maintenez enfoncé pour activer les lumières de fête Liquid Motion.
8. PORTS USB/TF : insérez une carte USB ou TF (avec contenu musical .mp3) pour la lecture de musique. Enregistrez le signal du microphone directement sur la carte USB ou TF.
9. AUX : Connectez un appareil audio externe à l'aide d'un câble audio TRS 3,5 mm.
10. MIC INPUT : connectez un microphone à l'aide d'un câble micro TRS 6,35 mm.
11. MIC VOL : Augmente/diminue le volume du micro.
12. MIC ECHO : ajoute de l'écho au signal du microphone
13. AFFICHAGE LED : Affiche la fonction actuelle.
14. TREBLE : amplifie les fréquences aiguës pour plus de clarté.
15. BASS : amplifie les basses fréquences pour un son plus riche.



**TRUE WIRELESS STEREO (TWS)**

1. Turn ON both units and enable Bluetooth mode on both speakers. Use the mode button.
2. Press and hold the "PLAY/PAUSE/TWS" button on one of the speakers (A) for 3 seconds.
3. On your mobile device under the Bluetooth menu, search for QFX LMS-12 and connect.
4. Open your favorite music app and enjoy True Wireless Stereo.
5. To exit press and hold the PLAY/PAUSE/TWS button.

1. Encienda ambas unidades y habilite el modo Bluetooth en ambos altavoces. Utilice el botón de modo.
2. Mantenga presionado el botón "PLAY/PAUSE/TWS" en uno de los altavoces (A) durante 3 segundos.
3. En su dispositivo móvil en el menú de Bluetooth, busque QFX LMS-12 y conéctese.
4. Abra su aplicación de música favorita y disfrute de True Wireless Stereo.
5. Para salir, presione y mantenga presionado el botón PLAY/PAUSE/TWS.

1. Allumez les deux unités et activez le mode Bluetooth sur les deux haut-parleurs. Utilisez le bouton mode.
2. Appuyez et maintenez enfoncé le bouton « PLAY/PAUSE/TWS » sur l'un des haut-parleurs (A) pendant 3 secondes.
3. Sur votre appareil mobile, dans le menu Bluetooth, recherchez QFX LMS-12 et connectez-vous.
4. Ouvrez votre application musicale préférée et profitez de True Wireless Stereo.
5. Pour quitter, appuyez sur le bouton PLAY/PAUSE/TWS et maintenez-le enfoncé.

**HOW TO USE FM RADIO:**

1. Use the "MODE" button to enable FM mode.
2. In FM mode press the "PLAY/PAUSE/TWS" button to automatically search and store FM Channels.
3. Press next or previous button to change the saved FM Channel.

1. Presione el botón "MODE" para habilitar el modo FM.
2. En el modo FM, presione el botón "PLAY/PAUSE/TWS" para buscar y almacenar automáticamente el canal FM.
3. Presione el botón siguiente o anterior para cambiar el canal FM guardado.

1. Appuyez sur le bouton "MODE" pour activer le mode FM.
2. En mode FM, appuyez sur le bouton « PLAY/PAUSE/TWS » pour rechercher et mémoriser automatiquement la chaîne FM.
3. Appuyez sur le bouton suivant ou précédent pour changer le canal FM enregistré

**BLUETOOTH:**

Use the MODE button to enable Bluetooth on the LMS-12. Open the Bluetooth settings on your mobile device and search for QFX LMS-12. Select the option to pair both devices together. You can now sit back and enjoy the music from your favorite app. You won't need reconnect the Bluetooth again when switching through modes.

Use el botón MODE para habilitar Bluetooth en el LMS-12. Abra la configuración de Bluetooth en su dispositivo móvil y busque QFX LMS-12 Seleccione la opción para emparejar ambos dispositivos. Ahora puede sentarse y disfrutar de la música de su aplicación favorita. No necesitará volver a conectar el Bluetooth al cambiar de modo.

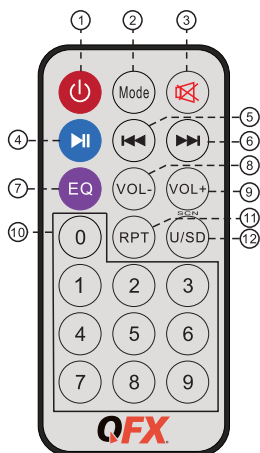
Utilisez le bouton MODE pour activer Bluetooth sur le LMS-12. Ouvrez les paramètres Bluetooth sur votre appareil mobile et recherchez QFX LMS-12. Sélectionnez l'option pour coupler les deux appareils ensemble. Vous pouvez maintenant vous asseoir et profiter de la musique de



1-800-864-CLUB (2582)  
Mon-Fri 9AM - 5PM (PST)



support@qfxusa.com  
Mon-Fri 9AM - 5PM (PST)



1. STAND BY: Turns the Power On/Off
2. MODE: Switch the Media Input Mode
3. MUTE: Press to mute the Volume
4. Play/Pause: Press to Play or Pause
5. ICC Previous track
6. Next track
7. EQ: Choose preset Equalizer
8. VOL- :Volume down
9. VOL+: Volume up
10. Number: Number keypad selection
11. RPT: Press to repeat and/or shuffle
12. U/SD: Signal Input

1. STAND BY: enciende y apaga la unidad
2. MODO: cambia el modo de entrada de medios
3. MUTE: presione para silenciar el volumen
4. Reproducir / Pausar: presione para reproducir o pausar
5. ICC Pista anterior
6. Siguiete pista
7. EQ: elija ecualizador preestablecido
8. VOL-: Bajar volumen
9. VOL +: Subir volumen
10. Número: selección del teclado numérico
11. RPT: presione para repetir y / o mezclar
12. U / SD: Entrada de señal

1. STAND BY : allume/éteint l'appareil
2. MODE : changer le mode d'entrée multimédia
3. MUTE : Appuyez pour couper le volume
4. Lecture/Pause : appuyez pour lire ou mettre en pause
5. ICC Piste précédente
6. Piste suivante
7. EQ: Choisissez l'égaliseur prédéfini
8. VOL- : Baisser le volume
9. VOL+ : Augmenter le volume
10. Numéro : sélection du clavier numérique
11. RPT : Appuyez pour répéter et/ou mélanger
12. U/SD : entrée de signal

# THANK YOU

**QFX** Where the Party Begins!

We would love to hear about your LMS-12 journey!  
Tag us [@QFXUSA](https://www.instagram.com/QFXUSA) to share your stories.

FOLLOW US [@QFXUSA](https://www.instagram.com/QFXUSA)





## LIMITED PRODUCT WARRANTY POLICY

Before returning your Product for service under this Warranty, please (i) read the instruction manual carefully and visit our website at [www.qfxusa.com](http://www.qfxusa.com) for Product updates and extended support documentation (e.g., Common Troubleshooting Guides); (ii) if you are still having trouble with your Product, please contact the QFX Customer Support Department.

Subject to the terms and conditions herein, QFX, Inc. (herein after called "QFX") warrants to the original purchaser of the Product ("Customer") that for the applicable Warranty Period listed below, the Product will be free from defects in material or workmanship under normal, non-commercial use ("Defects").

Warranty Period encompasses, as listed below, separate "Coverage Periods" for Parts and Labor, each Coverage Period to begin from the original date of Customer purchase. If Customer returns a defective Product (or any component thereof) during the applicable Warranty Period, QFX will, at its option, during the specified Coverage Periods for Parts and Labor (as applicable either: (i) repair the Product (or, as applicable, any component thereof) or (ii) replace the Product (or, as applicable, any component thereof) with a new or refurbished Product (or, as applicable, any component thereof), in either case free of charge to Customer for Parts and/or Labor (as applicable) during the specified Coverage Period only, and excluding applicable shipping charges (noted below), for which the Customer is responsible. The foregoing states the Customer's exclusive remedy and QFX sole liability for breach of the limited warranty contained herein.

This warranty covers only normal use. This warranty is not transferable. QFX is not responsible for warranty replacement should the QFX label or logo be removed or should the product fail to be properly maintained or fail to function properly as a result of **misuse, abuse, immersion in liquids, improper installation, improper shipping, damage caused by disasters such as fire, flood, or service other than by QFX**. In addition, this warranty excludes any Product (or, as applicable, any component thereof) that has been subject to or Defects resulting from: (a) any neglect or misuse by a Customer, an accident, improper application, violation of operating instructions for the Product, any other Customer-induced damage, or the alteration or removal of any Product serial number; (b) any modification or repair to Product (or, as applicable, any component thereof) by any party other than QFX or a party authorized in writing by QFX; (c) any damage to Product (or, as applicable, any component thereof) due to power surges, incorrect electrical voltage, misconnection to any device, or malfunction of any device used with the Product (or, as applicable, any component thereof); (d) cosmetic damage to the Product (or, as applicable, any component thereof) caused by normal wear and tear; (e) shipping damage that occurs while the Product is in transit; (f) damage caused by heat sources, sunlight, electromagnetic conditions, or other climatic conditions or (g) any acts of God.

Product is sold to Customer for personal, non-commercial use only. Product is not warranted for Customer's commercial or rental use. In addition, Product is not warranted against failure, and should not be used by Customer for any application where (i) there is a risk that any data stored on Product will be breached or otherwise compromised, or (ii) the data stored on Product is relied upon for medical or lifesaving applications. QFX disclaims any Warranty for any of the foregoing uses to the fullest extent permitted by law. Customer assumes any and all risks associated with such uses of Product, and agrees to indemnify QFX for any damages claimed against QFX for such uses.

EXCEPT FOR EXPRESS WARRANTIES STATED ABOVE AND TO THE MAXIMUM EXTENT PERMITTED BY LAW, THE PRODUCTS ARE PROVIDED "AS IS" AND QFX DISCLAIMS ALL OTHER WARRANTIES, INCLUDING WITHOUT LIMITATION ANY IMPLIED WARRANTY (i) OF MERCHANTABILITY, (ii) OF FITNESS FOR A PARTICULAR PURPOSE, OR (iii) OF NON-INFRINGEMENT OF THIRD PARTY RIGHTS. TO THE MAXIMUM EXTENT PERMITTED BY APPLICABLE LAW, IN NO EVENT WILL QFX BE LIABLE TO CUSTOMER OR ANY THIRD PARTY FOR ANY INDIRECT, SPECIAL, INCIDENTAL, CONSEQUENTIAL, EXEMPLARY OR PUNITIVE DAMAGES, INCLUDING, WITHOUT LIMITATION, ANY LOST PROFITS OR REVENUES, LOSS OR INACCURACY OF ANY DATA OR COST OF SUBSTITUTE GOODS, REGARDLESS OF THE THEORY OF LIABILITY (INCLUDING NEGLIGENCE) AND EVEN IF QFX HAS BEEN ADVISED OF THE POSSIBILITY OF SUCH DAMAGES, QFX AGGREGATE LIABILITY TO CUSTOMER FOR ACTUAL DIRECT DAMAGES FOR ANY CAUSE WHATSOEVER SHALL BE LIMITED TO THE CUMULATIVE PRODUCT FEES PAID BY THAT CUSTOMER FOR THE PRODUCTS CAUSING THE DAMAGES, IF ANY.

This Warranty gives Customer specific rights, and Customer may also have other rights that vary from jurisdiction to jurisdiction. Warning: Some Products may contain components that are small enough to be swallowed. Please keep out of reach of children. In order for the return to be processed, you must send the Product PREPAID to the address below in the original packaging or reasonable substitute to prevent damage and include: (1) a dated sales receipt (which must have a purchase date that falls in the Warranty Period specified in the table below) that indicates the place of purchase, model number of Product, and amount paid, (2) a detailed description of Customer's problem with Product, (3) Customer's full name, phone number, and return address, (3) all of the accessories that came with the Product package must be sent along with the main Product, (4) a cashier's check or money order payable to QFX, Inc., in the amount specified for the item in the product table below for return shipping and handling. If in the case you cannot provide a money order or cashier's check, you can contact The QFX Customer Support Representative to arrange payment via credit card. No returned Product will be shipped back to a PO BOX. If a returned Product is found to have no problem and/or does not include ALL of the requirements indicated above, it may be returned back to the customer and will not be processed.

FOLLOW US @QFXUSA



**QFX USA® , Inc.**  
RMA Processing  
Customer Support Department  
2957 E. 46th Street | Vernon, CA 90058

support@qfxusa.com  
(800) 864-CLUB (2582) or (323) 864-6900  
qfxusa.com  
Hours of Operation: Monday - Friday, 9am - 5pm PST

All prices and details below are for US Destinations excluding, Hawaii, Alaska and Puerto Rico. For excluded destinations and NON US destinations, please contact The QFX Customer Support Department directly for additional shipping fees and return instructions.

If you do not find your Product below, your Product model conflicts with multiple categories, and/or are unsure of which category the Product you have purchased will fall under, please contact our Customer Support Department for further instruction.

In order to determine the exact shipping cost that must be included with your product or paid for the product being returned, please refer to the table below. Please find the product you wish to return by category or model number prefix. QFX will not provide any return or refund to any customer for merchandise and will only honor the Limited Warranty restrictions mentioned in this document.

Please make sure to follow all directions prior to shipping back your item. If you are not sure what the shipping cost for your item is, or if your item category conflicts in the table below, please feel free to contact the QFX Support Department for further assistance.

PRODUCT CATEGORY	HANDLING	LABOR	PARTS
Earphones, Headphones, Pocket Radios, & Small Bluetooth vSpeakers	\$5.00	1 Year	1 Year
Personal Stereos	\$10.00	1 Year	1 Year
Portable Radio/Cassette	\$15.00	1 Year	1 Year
Large Portable Radio Cassette	\$20.00	1 Year	1 Year
Mobile Audio	\$10.00	1 Year	1 Year
Pro Audio SBX Systems	\$75.00	1 Year	1 Year
Pro Audio PBX Systems	\$75.00	1 Year	1 Year
Televisions	\$25.00	1 Year	1 Year
Telephones	\$10.00	1 Year	1 Year

THE WARRANTY AND REMEDY PROVIDED ABOVE ARE EXCLUSIVE AND IN LIEU OF ALL OTHER EXPRESSED OR IMPLIED WARRANTIES INCLUDING, BUT NOT LIMITED TO, THE IMPLIED WARRANTIES OF MERCHANTABILITY, NON-INFRINGEMENT OR FITNESS FOR A PARTICULAR PURPOSE. SOME LAWS DO NOT ALLOW THE EXCLUSION OF IMPLIED WARRANTIES. IF THESE LAWS APPLY, THEN ALL EXPRESSED OR IMPLIED WARRANTIES ARE LIMITED TO THE WARRANTY PERIOD IDENTIFIED ABOVE. UNLESS STATED HEREIN, ANY STATEMENT OR REPRESENTATIONS MADE BY ANY OTHER PERSONS OR FIRM ARE VOID. EXCEPT AS PROVIDED IN THIS WRITTEN WARRANTY, QFX SHALL NOT BE LIABLE FOR ANY LOSS, INCONVENIENCE, OR DAMAGE, INCLUDING DIRECT, SPECIAL, INCIDENTAL OR CONSEQUENTIAL DAMAGES, RESULTING FROM THE USE OR INABILITY TO USE THE QFX PRODUCT, WHETHER RESULTING FROM BREACH OF WARRANTY OR ANY OTHER LEGAL THEORY.

Some jurisdictions do not allow limitations on how long an implied warranty lasts, and some jurisdictions do not allow the exclusion or limitation of incidental or consequential damages, so the above limitations and exclusions may not apply to you. This warranty gives you special legal rights and you may have other rights which vary from jurisdiction to jurisdiction.

Copyright Protected 2022 ©



[www.qfxusa.com](http://www.qfxusa.com)